



ULTRASLIP

Ultraslip, a super slippery plastic is an ideal solution for many applications in the package handling industry. Used in chute linings, spirals, slides, slider beds, or any areas where packages can get lodged or damaged. Silicone impregnated, it provides a very low friction surface that requires no lubrication to maintain its excellent properties and is virtually maintenance free.

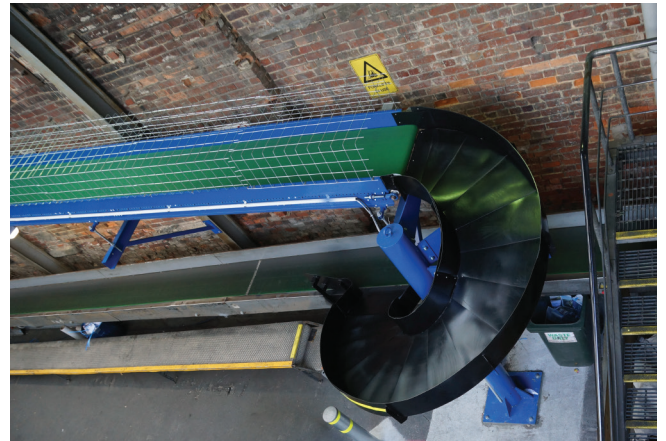
Features & Benefits

- Excellent abrasion and wear resistance
- High impact strength even at low temperatures
- No moisture absorption
- Self lubricating - no need for oils and lubricants
- Sound dampening properties
- Chemical and corrosion resistant
- Maintains properties even at -30°
- Low coefficient of friction, enhancing package flow
- Adhesive backing for easy installation
- Static dissipative, preventing static shocks and damage to barcoding system.

Uses:

An excellent solution where materials rub against each other creating noise and wear that might compromise with the function and/or life of the materials.

- Chute linings
- Slider beds
- Spirals
- Slides
- Conveyor sides
- Dyno Chain Wearstrip - Ultraglide





ULTRASLIP

Specifications

Materials

UHMW-PE resin blend with silicone impregnated properties. Pressure sensitive adhesive backing

Thicknesses

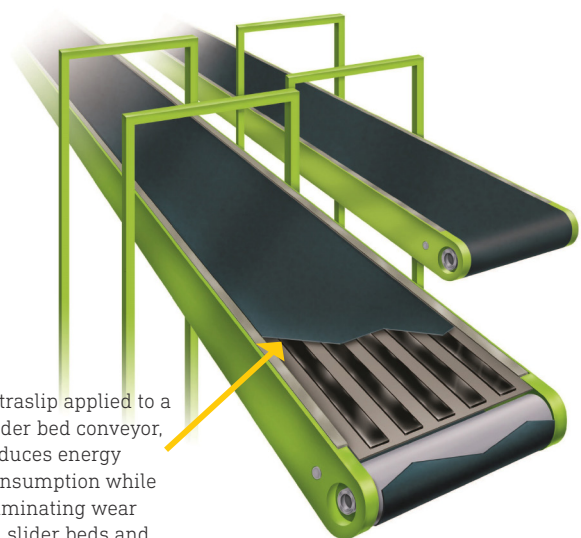
0.62" (1.57mm), 0.93" (2.36mm), 0.125" (3.17mm)

Width

All dimensions between 1/4" (6.35mm) and 24" (610mm)

Adhesives

A wide range of adhesive backing available to accommodate every application



Ultraslip applied to a slider bed conveyor, reduces energy consumption while eliminating wear on slider beds and extending life of belts and drives.



When applied to side guides, Ultraslip enhances package flow and reduces the risk of damage.

Ultraslip reduces package flow jams and the damage to packages caused by jamming.

Ultraslip enhances package flow and protects the surface of steel sorting chutes, spirals and tables.

| Comparison of Dynamic Coefficient of Friction on Polished Steel | |
|---|-------------|
| Material | Ultraslip |
| Dry | 0.10 - 0.22 |
| Water | 0.05 - 0.10 |
| Oil | 0.05 - 0.08 |