



A to B, seamlessly.



Bearing Technical Catalogue '17



It's how businesses get along

---

At Dyno we make the world of  
business go round.

Up and down.

And side to side.

Our conveyors make moving meat,  
veges, fruit, packages, gravel, and even luge sleds simple and  
efficient.

We can customise to meet your needs  
and all our designs are proprietary.

It all sounds new and high-tech, and it is.  
But in reality we're an inter-generational  
Kiwi company which has been designing and building conveyors  
for over two decades now.

All that experience, and our knowledge  
of the industries we work with,  
is part of a total approach that includes supplying parts, and  
maintenance by trained engineers.



**DYNO Conveyors warranties equipment supplied free from defective materials and workmanship for a period of 5 years, subject to satisfactory care and maintenance and being used according to original specifications.**

# CONTENT

---

|                                  |       |
|----------------------------------|-------|
| Design considerations .....      | 4     |
| Part number (descriptions) ..... | 5-6   |
| Ordering details .....           | 7-8   |
| Roller Bearings                  |       |
| Ø20 .....                        | 9     |
| Ø25 .....                        | 9     |
| Ø30 .....                        | 9     |
| Ø32 .....                        | 10    |
| Ø35 .....                        | 10    |
| Ø38 .....                        | 10    |
| Ø42 .....                        | 11    |
| Ø48 .....                        | 12-13 |
| Ø50 .....                        | 13-15 |
| Ø51 .....                        | 16    |
| Ø60 .....                        | 17-18 |
| Ø75 .....                        | 19-20 |
| Ø89 .....                        | 20    |
| Ø114 .....                       | 21    |
| Reducer Bush .....               | 21    |

# DESIGN CONSIDERATIONS

---

## Details Required:

- Type of product being conveyed .....
- Length of product .....
- Width of product .....
- Height of product .....
- Weight of product .....
- Speed required .....
- Environmental conditions .....

## Rollers

A minimum of three rollers are required under the load at all times, products with uneven bases require more.

Ideal roller length is - load width + 50mm. This is a critical minimum with some types of plastic crates, but is of lesser importance with flat bottomed cartons.

Pallets usually flex under load causing only 1/3 of the rollers to carry the load, always allow for this.

Tapered rollers guarantee correct movement on bends.

Precision bearing rollers run smoothly at higher speeds for long periods but can have a greater resistance for manual movement.

## Advantages of Plastic Rollers

- Light weight
- Noise dampening
- Resistance to corrosion
- Cleanliness

Temperature range of all our standard plastics is 5°C to 40°C, although they can be used down to -20°C with lowered impact resistance, or up to 60°C with reduced load.

Dynopipe is extra special high impact resistant PVC.

## Shafts

Spring loaded shafts are the simplest design, giving quick and easy assembly and maintenance.

Male and female threaded shafts give higher load capacity and reduced vibration as they are secured direct to the conveyor frame. Female threads have the advantage of very simple assembly.

Spring loaded shafts are standard on most rollers.  
Female threads are most common on driven rollers.  
Large diameter rollers often have a fixed shaft.

Many other options are available to special order.

**Remember – Gravity works for free**

## Roller Bearings

e.g.  $\underbrace{50}_1 \underbrace{7}_2 \underbrace{SS}_3 - \underbrace{12H}_4 \underbrace{(Z14DF)}_5$

1. Tube Outside Diameter in nearest mm
2. Bearing type
  - 0 = Bush
  - 1 = Thermoplastic race, carbon steel balls
  - 2 = Thermoplastic race, stainless steel balls
  - 3 = Steel (unground)
  - 4 = Steel (unground), thermoplastic housing
  - 5 = Precision bearing, zinc plated steel housing and bush
  - 6 = Precision bearing, zinc plated steel housing, thermoplastic bush
  - 7 = Precision bearing, thermoplastic housing and bush. Press fit
  - 8 = Precision bearing, thermoplastic housing and bush. Swage fit
  - 9 = Fixed, for example = drums
3. Bearing details
  - A = Antistatic
  - B = Blind
  - C = Caged balls
  - G = Greased (extra)
  - HD = Heavy duty
  - M = Machined
  - SE = Sealed (extra)
  - SS = Stainless steel precision bearing
  - T = Includes locater for tapered elements
4. Shaft size + detail
  - H = Hexagonal across flats dimension
  - Q = Ø10mm with 8mm across flats
5. Extras
  - Z = Chain sprocket
  - ZB = Toothed belt sprocket
  - 14 = Number of teeth
  - S = Single
  - D = Double
  - F = Fixed
  - L = Loose

## ROLLER BEARINGS

e.g. **50 7 SS – 12H (Z14DF) / D2.8 – SS – SP 447OBL / T**

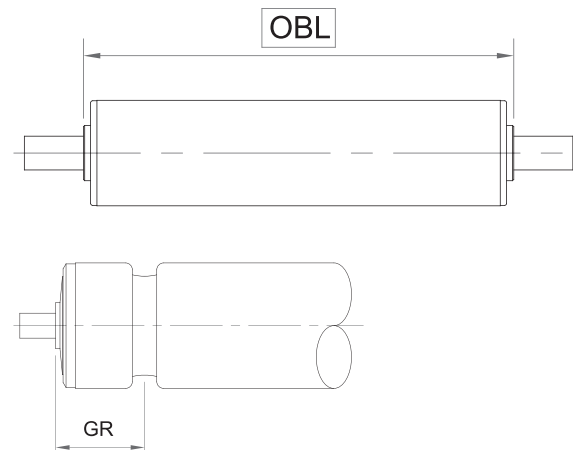
1 2 3 4 5 6 7 8 9 10

1. Tube Outside Diameter in nearest mm.
2. Bearing type, (as per Roller Bearing part number description).
3. Bearing details, (as per Roller Bearing part number description).
4. Shaft size + detail, (as per Roller Bearing part number description). Standard Shaft: 15mm out each end
5. Extras, (as per Roller Bearing part number description).
6. Tube material + (wall thickness when ordering non-standard wall thickness rollers)
  - AL = Aluminium.
  - D = Dynopipe.
  - G = Galvanised steel.
  - R = Rubber coated.
  - P = Plastic.
  - N = Stainless steel.
  - B = Black
7. Shaft material
  - AL = Aluminium.
  - MS = Mild steel.
  - SS = Stainless steel.
  - ZP = Mild steel zinc plated

8. Type of shaft
  - DL = Cross drilled.
  - F = Fixed.
  - FL = Flats.
  - FT = Female threads.
  - MT = Male threads.
  - SP = Sprung.
  - P = Loose

9. Length of roller
  - IF = Inside frame.
  - OBL = Over bearing length.

10. Extras
  - T = Taper.
  - GR = Grooves + spacing from over bearing, e.g.
  - SL = Non standard shaft length and details.



Measured from outside of bearing to centre of groove

| Tube Outside Diameter |  |
|-----------------------|--|
| Ø20                   |  |
| Ø25                   |  |
| Ø32                   |  |
| Ø38                   |  |
| Ø42                   |  |
| Ø48                   |  |
| Ø50                   |  |
| Ø51                   |  |
| Ø60                   |  |
| Ø76                   |  |
| Ø89                   |  |
| Ø114                  |  |
| Other                 |  |

| Tube Material   |  |
|-----------------|--|
| Plastic         |  |
| Dynopipe        |  |
| Galv. steel     |  |
| Stainless steel |  |

| Tube Wall Thickness |  |
|---------------------|--|
| Standard            |  |
| Heavy duty          |  |
| Other               |  |

| Shaft Size |  |
|------------|--|
| Ø6         |  |
| Ø8         |  |
| 8mm Hex    |  |
| Ø9.5       |  |
| Ø10        |  |
| 10Q (Al)   |  |
| Ø11        |  |
| 11mm Hex   |  |
| Ø12        |  |
| Ø12.7      |  |
| Ø15        |  |
| Ø16        |  |
| 16mm Hex   |  |
| Ø17        |  |
| Ø19        |  |
| Ø20        |  |
| Ø25        |  |
| Other      |  |

| Shaft Material  |  |
|-----------------|--|
| Mild steel      |  |
| Stainless steel |  |
| Aluminium       |  |
| Other           |  |

| Cross Drilled     |  |
|-------------------|--|
| One end           |  |
| Both ends         |  |
| Hole size         |  |
| Distance from end |  |

| Flats           |    |
|-----------------|----|
| One end         |    |
| Both ends       |    |
| Length of flats | mm |
| Across flats    | mm |

| Threads        |    |
|----------------|----|
| Female threads |    |
| Male threads   |    |
| One end        |    |
| Both ends      |    |
| Thread size    |    |
| Thread depth   | mm |

| Bearing Type                     |  |
|----------------------------------|--|
| Bushed                           |  |
| Plastic race, carbon steel balls |  |
| Plastic race, S/S balls          |  |
| Steel (unground)                 |  |
| Steel (precision)                |  |
| Plastic housing (precision)      |  |
| Stainless steel (precision)      |  |

| Shaft Details |  |
|---------------|--|
| Loose         |  |
| Spring loaded |  |
| Fixed         |  |

| Bearing Extras |  |
|----------------|--|
| Antistatic     |  |
| Blind          |  |
| Greased        |  |
| Sealed         |  |

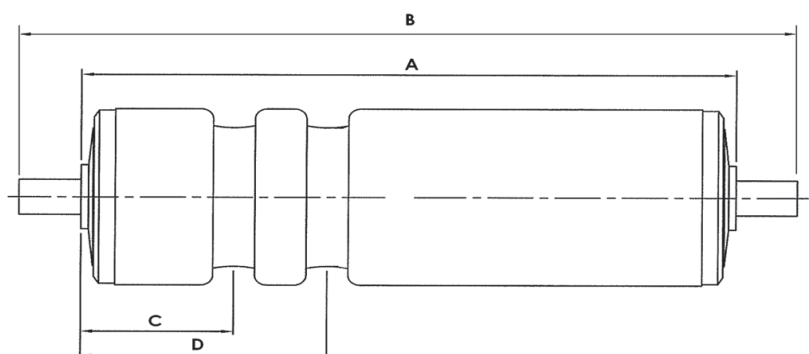
| Extras             |  |
|--------------------|--|
| Tapers             |  |
| Details            |  |
| Grooves            |  |
| Position No. 1 (C) |  |
| Position No. 2 (D) |  |
| Sprockets          |  |
| Single             |  |
| Double             |  |
| Fixed              |  |
| Loose              |  |
| Rubber coating     |  |
| Other              |  |

| Roller Length (mm)            |  |
|-------------------------------|--|
| Inside frame (IF)             |  |
| Over bearing length (OBL) (A) |  |
| Non standard shaft length (B) |  |

Standard Spring Loaded shaft lengths

- Ø6mm = OBL + 25mm
- Ø8 – Ø15mm = OBL + 30mm
- Ø16mm plus = OBL + 40mm

| Quantity Required |
|-------------------|
|                   |



# ORDER DETAILS - GRAVITY ROLLER CONVEYOR

| Frame Material                          |  |
|-----------------------------------------|--|
| Steel (powder coated)                   |  |
| Steel (zinc rich primer, powder coated) |  |
| Steel (hot dip galvanised)              |  |
| Stainless steel                         |  |

| Frame Dimensions         |        |  |
|--------------------------|--------|--|
| Inside frame size Length | 2400mm |  |
|                          | 1200mm |  |
|                          | 600mm  |  |

| Roller pitch        |  |
|---------------------|--|
| 32mm                |  |
| 64mm                |  |
| 96mm (most popular) |  |
| 128mm               |  |
| 160mm               |  |
| 192mm               |  |
| 224mm               |  |

|                      |  |
|----------------------|--|
| Roller size and type |  |
|----------------------|--|

|                     |  |
|---------------------|--|
| Shaft size and type |  |
|---------------------|--|

| Extras      |          |  |
|-------------|----------|--|
| Guide rails | Details  |  |
|             | Quantity |  |
| Bends       | Details  |  |
|             | Quantity |  |
| Gates       | Details  |  |
|             | Quantity |  |
| Others      | Details  |  |
|             | Quantity |  |

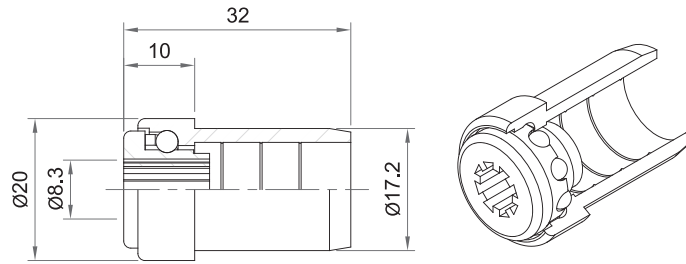
| Stand Details                          |  |
|----------------------------------------|--|
| Stand material (if different to frame) |  |
| Roller height from floor (TOR)         |  |
| Stand Type - Henley Top                |  |
| Foot Type - Ajustafoot (see pg 63)     |  |
| Foot Type - Unistrut (see pg 63)       |  |

| Sketch |  |
|--------|--|
|        |  |



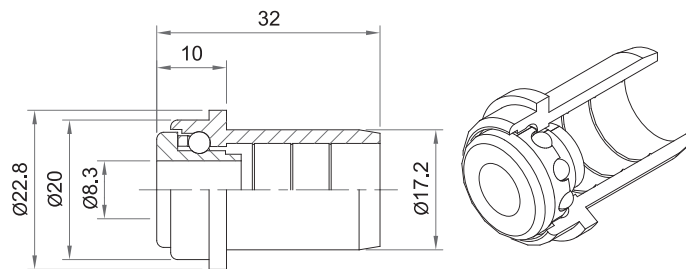
### 202-6 Ball Bearing

- Load capacity 5kg.
- Grey polypropylene inner and outer race.
- Stainless steel balls caged as standard.
- Suits;
  - 20 x 1.5 tube - Aluminium
  - PVC
  - S/S
- Option; 8mm bore, Grey 202-8



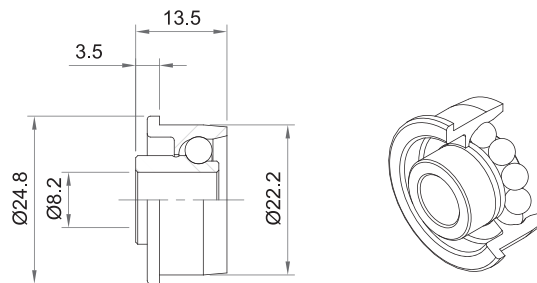
### 202T-8 Ball Bearing

Same as 202-8 with extra flange on head to retain tapered element



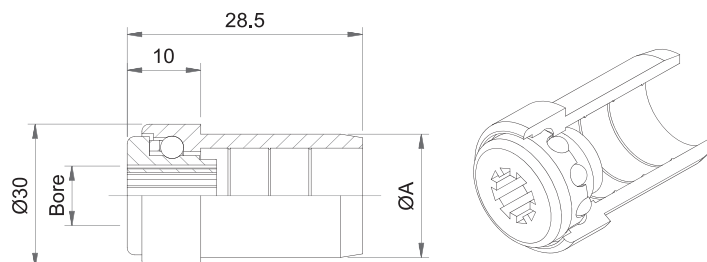
### 251-8 / 252-8 Ball Bearing

- Load capacity 10kg.
- Acetal inner and outer race.
- Black – carbon steel balls (251).
- Red – stainless steel balls (252).
- Suits:
  - 25.4 x 1.6 tube - Galv. steel
  - S/S
  - Dynopipe 254
- Steel Option; 253-8 (25kg load capacity)



### 302 Ball Bearing

- Load Capacity 7kg
- Grey Polypropylene inner and outer race.
- Stainless steel balls caged as standard
- Suits:
  - 30 x 1.8 Plastic Tube (302)
  - 32 x 1.5 Galv or SS (322)
- Option: 6 , 8, 10mm Bore

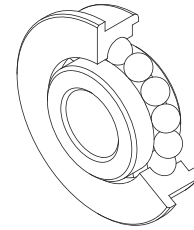
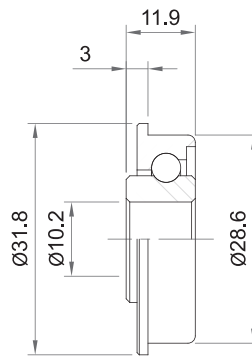


| A   |        |
|-----|--------|
| 302 | 26.5mm |
| 322 | 28.1mm |

# ROLLER BEARINGS

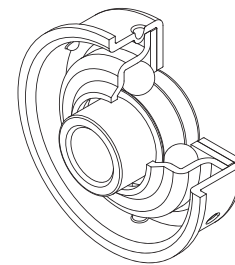
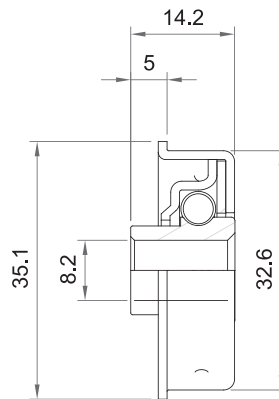
## 323-10 Ball Bearing

- Load capacity 20kg.
- All steel – bearing and holder
- Zinc plated finish.
- Suits;
  - 31.8 x 1.6 tube - Galv. steel
  - S/S
- Optional bore sizes
  - 323-9.5
  - 323-11



## 353-8 Ball Bearing

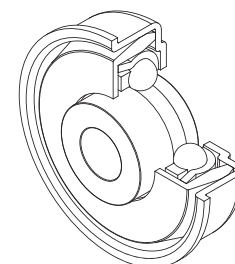
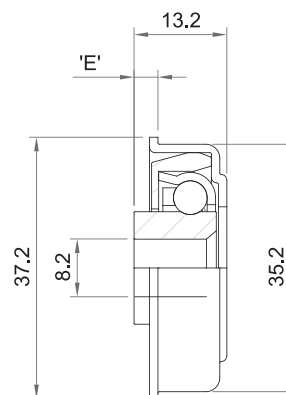
- Free running, ideal for gravity rollers.
- Load capacity 20kg.
- All steel bearing and holder.
- Zinc plated finish.
- Suits;
  - 35 x 1.2 tube - Galv. steel



## 383C-8 / 383C-10 Ball Bearing

Very quiet and free running.

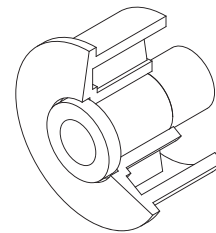
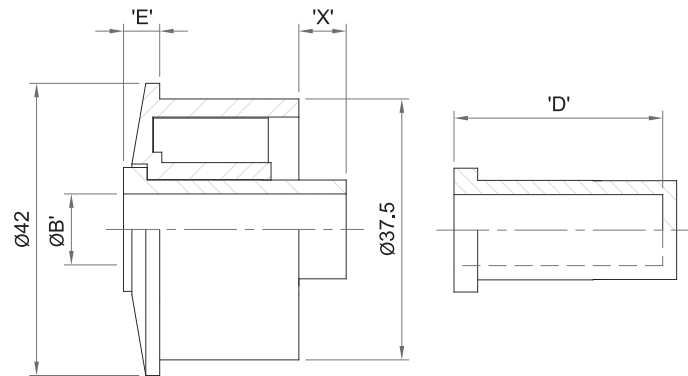
- Excellent for gravity rollers.
- Load capacity 50kg.
- All steel bearing and holder.
- Plastic ball cage, for quiet running.
- Zinc plated finish.
- Suits;
  - 38 x 1.5 tube - Galv. Steel.



| Bore Size | 'E' |
|-----------|-----|
| 8         | 5   |
| 10        | 3   |

### 420 (P32D) Bushed Bearing

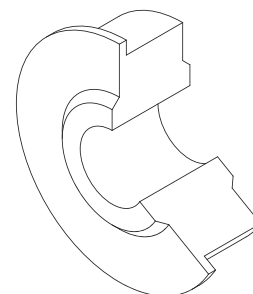
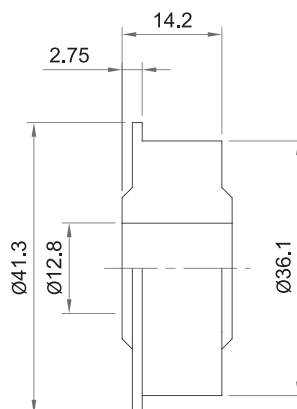
- Load capacity 15kg.
- Bearing holder white ABS.
- Suits;
  - 42 x 2.5 tube - PVC (32 PN12)



| Code     | Bush Material | Bore Size 'B' | Extension 'E' | Inside Extension 'X' | Useable Depth of Blind Bush 'D' |
|----------|---------------|---------------|---------------|----------------------|---------------------------------|
| 420-5    | White Acetal  | 5.1           | 5.5           | 6.5                  |                                 |
| 420-6    | White Acetal  | 6.5           | 5.5           | 6.5                  |                                 |
| 420-8    | White Acetal  | 8.7           | 5.5           | 6.5                  |                                 |
| 420B-8   | White Acetal  | 8.7           | 5.5           | 6.5                  | 17                              |
| 420-9.5  | White Acetal  | 10            | 5.5           | 6.5                  |                                 |
| 420B-9.5 | White Acetal  | 10            | 5.5           | 6.5                  | 30                              |
| 420-10   | White Acetal  | 10.4          | 5.5           | 6.5                  |                                 |
| 420-11   | Black Nylon   | 11.1          | 7.25          |                      |                                 |
| 420B-12  | Black Nylon   | 12.5          | 4.5           |                      | 20                              |
| 420-12.7 | Black Nylon   | 12.8          | 7.25          |                      |                                 |

### 420HD-12 Bushed Bearing

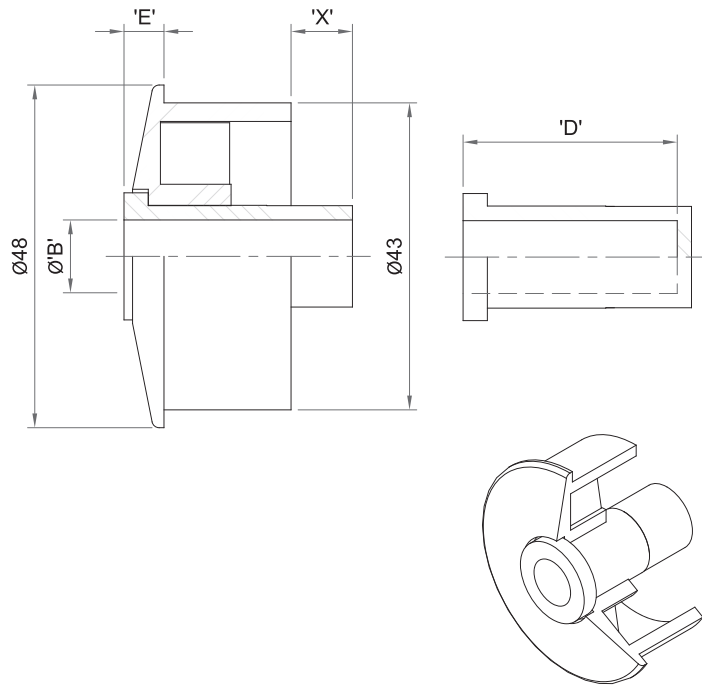
- Load capacity 25kg.
- Black nylon.
- Suits;
  - 42.4 x 3.2 tube - S/S (32 NB sch. 40)
- Option; 420HD-16



# ROLLER BEARINGS

## 480 (P40D) Bushed Bearing

- Load capacity 15kg.
- Bearing holder white ABS.
- Suits;
  - 48.3 x 2.8 tube - PVC (40 PN12)
  - Dynopipe 48.3 x 2.8
  - Galv. steel (40 NB light)
  - S/S (40 NB sch. 10)

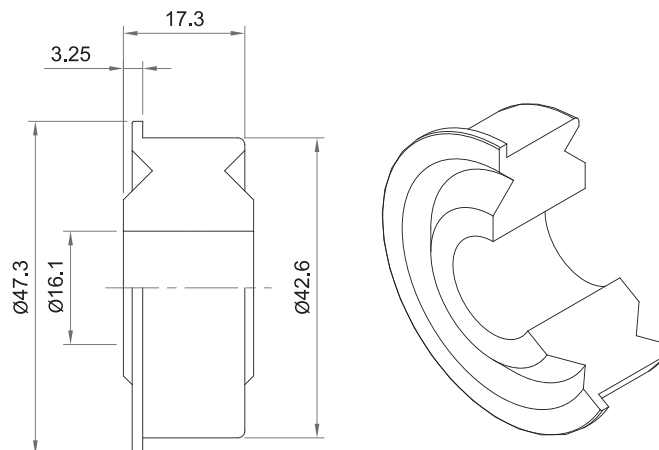


| Code     | Bush Material | Bore Size 'B' | Extension 'E' | Inside Extension 'X' | Useable Depth of Blind Bush 'D' |
|----------|---------------|---------------|---------------|----------------------|---------------------------------|
| 480-5    | White Acetal  | 5.1           | 5.25          | 9                    |                                 |
| 480-6    | White Acetal  | 6.5           | 5.25          | 9                    |                                 |
| 480-8    | White Acetal  | 8.7           | 5.25          | 9                    |                                 |
| 480B-8   | White Acetal  | 8.7           | 5.25          | 9                    | 17                              |
| 480-9.5  | White Acetal  | 10            | 5.25          | 9                    |                                 |
| 480B-9.5 | White Acetal  | 10            | 5.25          | 9                    | 30                              |
| 480-10   | White Acetal  | 10.4          | 5.25          | 9                    |                                 |
| 480-11   | Black Nylon   | 11.1          | 7             | 0                    |                                 |
| 480B-12  | Black Nylon   | 12.5          | 4             | 1.5                  | 20                              |
| 480-12.7 | Black Nylon   | 12.8          | 7             | 0                    |                                 |

- Also available – Grey polypropylene Bush for high acid environments

## 480HD-16 Bushed Bearing

- Load capacity 30kg.
- Black nylon.
- Suits;
  - 48.3 x 2.8 tube - PVC (40 PN12)
  - Dynopipe 48.3 x 2.8
  - Galv. steel (40 NB light)
  - S/S (40 NB sch. 40)
- Optional bore size 480HD-19

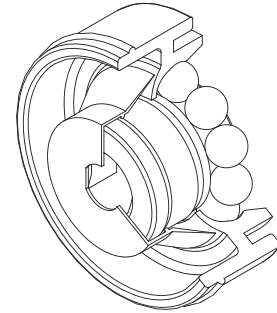
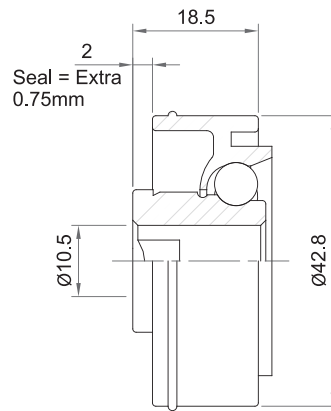


### 481-10/Q / 482-10/Q Ball Bearing

Our most popular bearing.

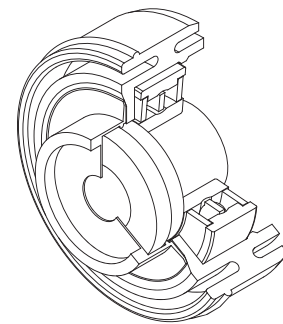
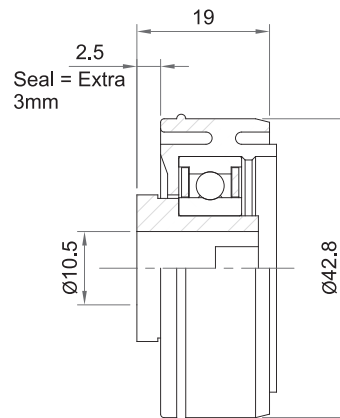
Can be used for gravity or powered roller.

- Load capacity 25kg.
- Acetal inner and outer race.
- Black – carbon steel balls (481).
- White – stainless steel balls (482).
- Suits;
  - 48.3 x 2.8 tube - Dynopipe 483
- Options
  - Sealed (481SE) or (482SE)
  - Greased (482G)
- Optional bore sizes
  - 10.6Q
  - 11
  - 12



### 487-10/Q Ball Bearing

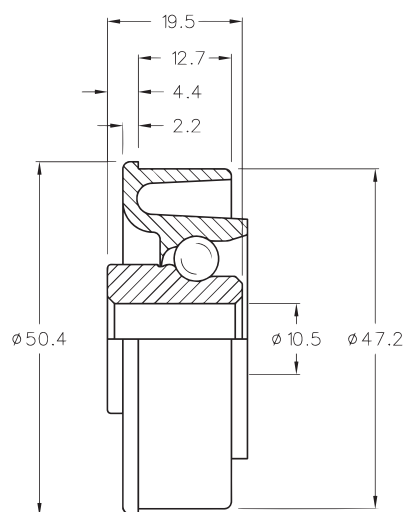
- Load capacity 100kg.
- White acetal bearing housing and bush.
- 6002 2RS precision bearing.
- Suits;
  - 48.3 x 2.8 tube - Dynopipe 483
- Options
  - Extra seal (487SE)
  - S/S Bearing (487SS)
  - 10.6 Q shaft
  - 11 or 12mm round.



### 502 Ball Bearing

Light duty, free running ball bearing.

- Load capacity 25kg.
- Acetal inner and outer race.
- Black – stainless steel balls (502).
- Suits;
  - 50 x 1.5 tube - Galv. steel
  - S/S
  - 50.8 x 1.43 - Aluminium
- Option;
  - Greased (G)
  - Ali D
  - 11 or 12mm round.

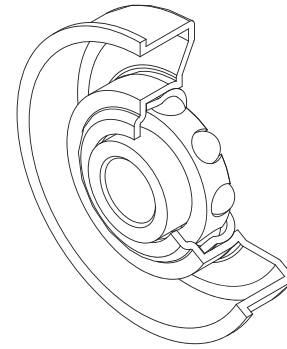
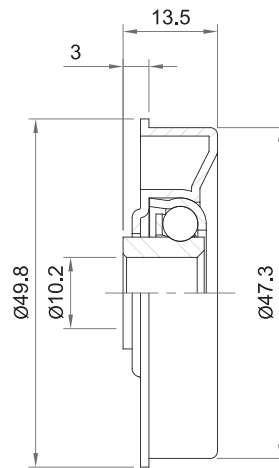


# ROLLER BEARINGS

## 503C-10 Ball Bearing

Very quiet and free running.

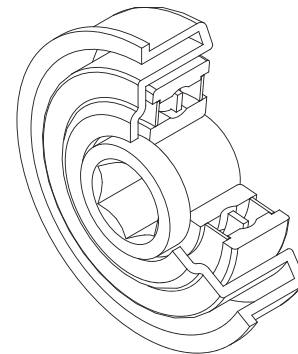
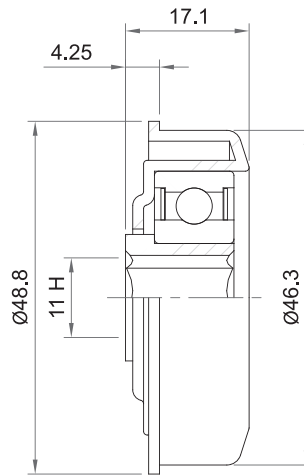
- Excellent for gravity rollers.
- Load capacity 60kg.
- All steel bearing and holder.
- Plastic ball cage, for quiet running.
- Zinc plated finish.
- Suits;
  - 50 x 1.5 tube - Galv. steel
  - 50.8 x 1.85 - Galv. steel
- Optional bore sizes
  - 503C-8
  - 503C-11H
  - 503C-12



## 505-11H Precision Bearing

Medium duty precision bearing for use when plastic housing is not desirable.

- Load capacity 100kg.
- Steel bearing housing and bush (z/plated).
- 6202Z Bearing.
- Suits;
  - 50 x 1.5 tube - Galv. steel
  - 50.8 x 1.85 - Galv. steel
- Optional bore sizes
  - 505-8
  - 505-10
  - 505-12
- 505-10 = 7.5mm
- Suitable for driven rollers or continuous running



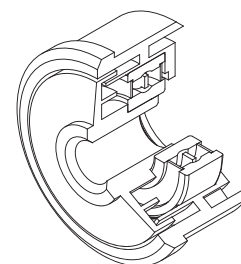
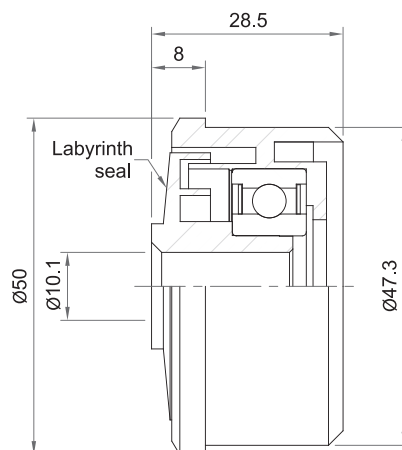
## 507-8 / 507-10 / 507-11H / 507-12 / 507-14 Precision Bearing

Most popular precision bearing. Matches with nylon sprockets.

- Load capacity 100kg.
- 6202 Bearing.
- Black polypropylene housing (Antistatic).
- Black polypropylene labyrinth (Antistatic except 8mm).
- Suits;
  - 50 x 1.5 tube - Galv steel
  - 50.8 x 1.85 - Galv steel
  - 50 x 1.5 - S/S
  - 50.8 x 2 - S/S
  - 50 x 1.6 - Aluminium

Option; 507SS

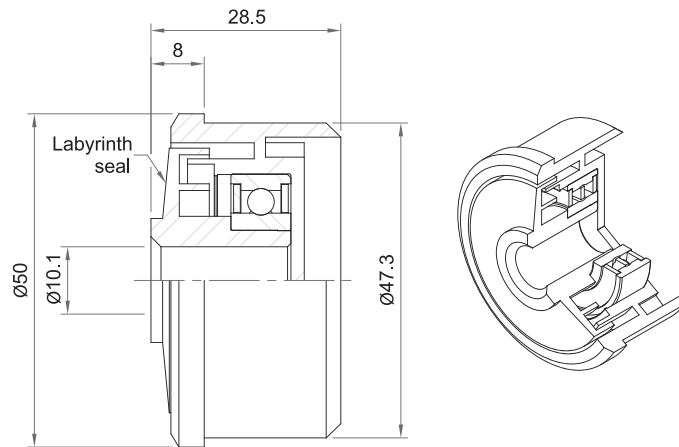
- Suitable for driven rollers or continuous running



### 507B Precision Bearing

Blind bearing housing to seal tube.

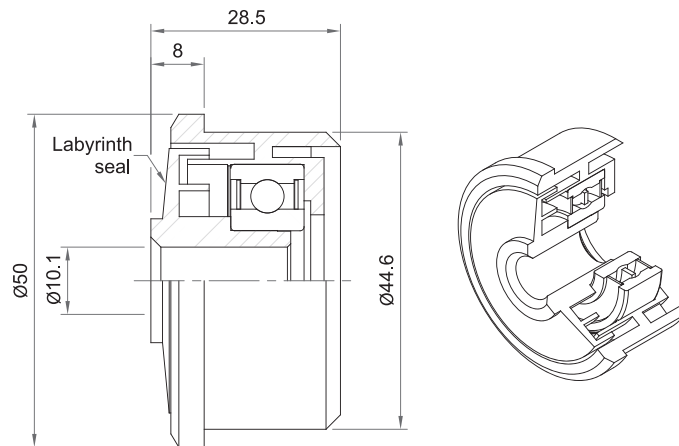
- Same details as 507.
- Not antistatic.
- Suitable for driven rollers or continuous running



### 507P-10 Precision Bearing

Most popular precision bearing.  
Matches with nylon sprockets.

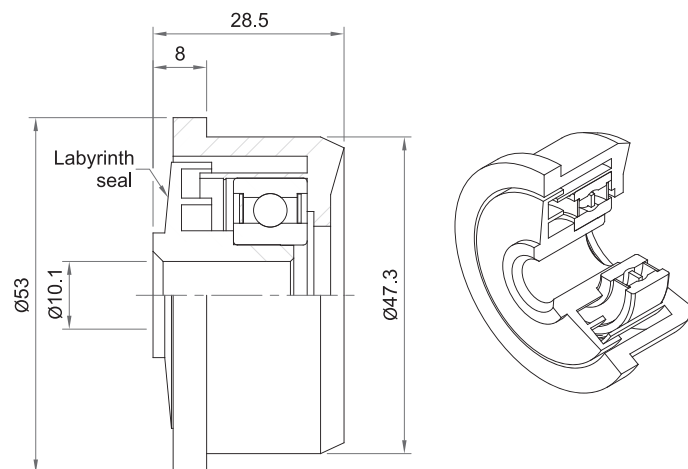
- Load capacity 100kg.
- 6202 Bearing.
- Grey polypropylene housing.
- Black polypropylene labyrinth.
- Suits;
  - 50 x 2.8 tube - Dynopipe
- Optional bore sizes
  - 507P-8
  - 507P-Q
  - 507P-11H
  - 507P-12
  - 507P-14
- Also available: 507PSS - Stainless Steel bearing
- Suitable for driven rollers or continuous running



### 507T Precision Bearing

Extra large head to retain tapered elements.

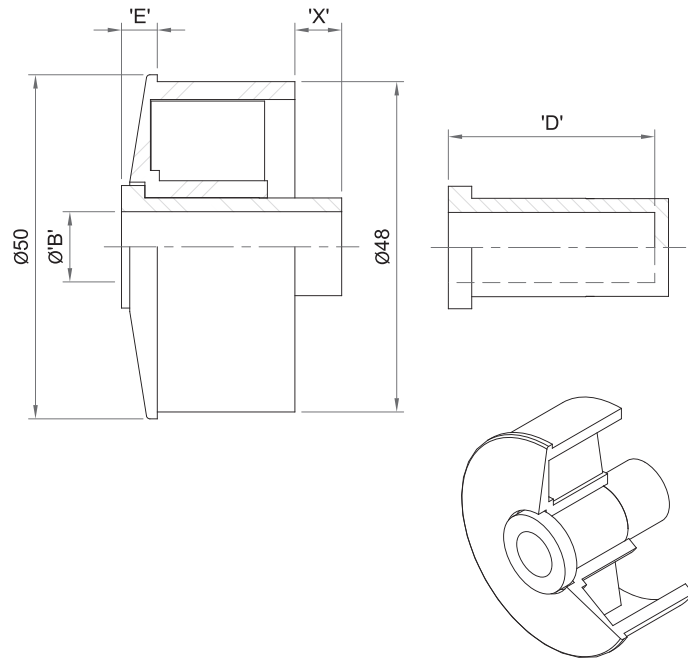
- Same details as 507.
- Not antistatic.
- Suitable for driven rollers or continuous running



# ROLLER BEARINGS

## 510 (S2) Bushed Bearing

- Load capacity 15kg.
- Bearing holder white ABS.
- Suits;
  - 50.8 x 1.6 tube - Galv. steel
  - S/S



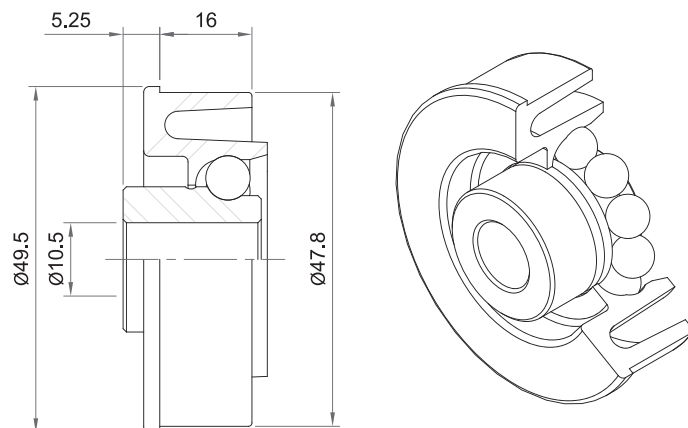
| Code     | Bush Material | Bore Size 'B' | Extension 'E' | Inside Extension 'X' | Useable Depth of Blind Bush 'D' |
|----------|---------------|---------------|---------------|----------------------|---------------------------------|
| 510-5    | White Acetal  | 5.1           | 5.5           | 6.5                  |                                 |
| 510-6    | White Acetal  | 6.5           | 5.5           | 6.5                  |                                 |
| 510-8    | White Acetal  | 8.7           | 5.5           | 6.5                  |                                 |
| 510B-8   | White Acetal  | 8.7           | 5.5           | 6.5                  | 17                              |
| 510-9.5  | White Acetal  | 10            | 5.5           | 6.5                  |                                 |
| 510B-9.5 | White Acetal  | 10            | 5.5           | 6.5                  | 30                              |
| 510-10   | White Acetal  | 10.5          | 5.5           | 6.5                  |                                 |
| 510-11   | Black Nylon   | 11.5          | 7.25          | 0                    |                                 |
| 510B-12  | Black Nylon   | 12.4          | 4.5           | 0                    | 20                              |
| 510-12.7 | Black Nylon   | 12.8          | 7.25          | 0                    |                                 |

- Also available – Grey polypropylene Bush for high acid environments

## 512-10 Ball Bearing

Light duty, free running ball bearing.

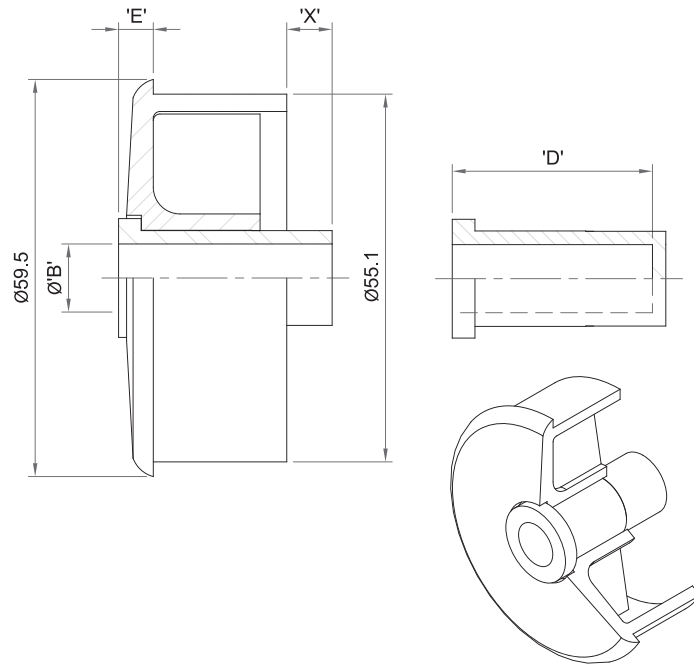
- Load capacity 25kg.
- Acetal inner and outer race.
- Red – stainless steel balls (512).
- Suits;
  - 50.8 x 1.8 tube - Galv. steel
  - 50.8 x 1.5 tube - S/S
  - 50.8 x 1.43 - Aluminium
- Option;
  - Greased (G)
- Optional bore sizes
  - 512-Q
  - 512-11H
  - 512-12





**600 (50C) Bushed Bearing**

- Load capacity 15kg.
- Bearing holder white ABS.
- Suits;
  - 60 x 2.8 tube - PVC (50 PN9)



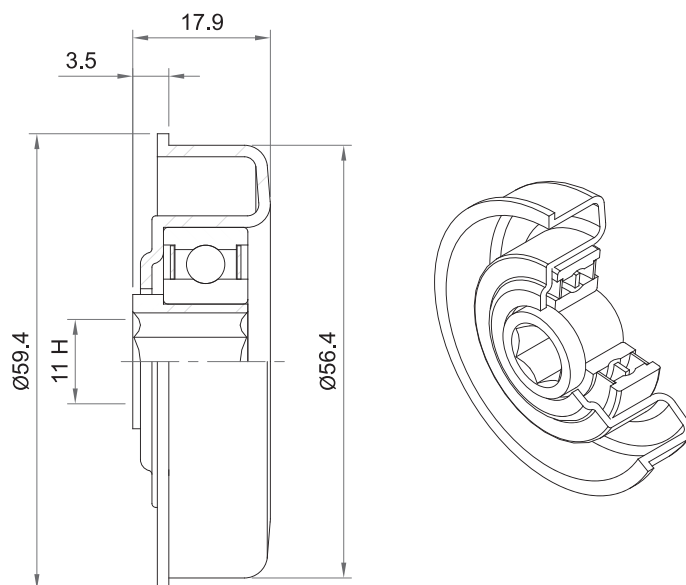
| Code     | Bush Material | Bore Size 'B' | Extension 'E' | Inside Extension 'X' | Useable Depth of Blind Bush 'D' |
|----------|---------------|---------------|---------------|----------------------|---------------------------------|
| 600-5    | White Acetal  | 5.1           | 5.25          | 6.5                  |                                 |
| 600-6    | White Acetal  | 6.5           | 5.25          | 6.5                  |                                 |
| 600-8    | White Acetal  | 8.7           | 5.25          | 6.5                  |                                 |
| 600B-8   | White Acetal  | 8.7           | 5.25          | 6.5                  | 17                              |
| 600-9.5  | White Acetal  | 10            | 5.25          | 6.5                  |                                 |
| 600B-9.5 | White Acetal  | 10            | 5.25          | 6.5                  | 30                              |
| 600-10   | White Acetal  | 10.5          | 5.25          | 6.5                  |                                 |
| 600-11   | Black Nylon   | 11.5          | 7             | 0                    |                                 |
| 600B-12  | Black Nylon   | 12.4          | 4.5           | 0                    | 20                              |
| 600-12.7 | Black Nylon   | 12.8          | 7             | 0                    |                                 |

- Also available – Grey polypropylene Bush for high acid environments

**605-11H Precision Bearing**

Medium duty precision bearing for use where plastic housing is not desirable eg. extreme temp.

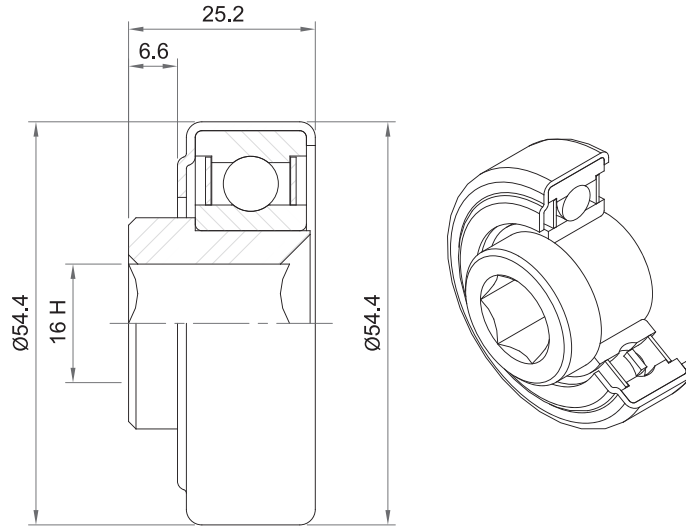
- Load capacity 100kg.
- Steel bearing housing and bush (z/plated).
- 6202Z bearing.
- Suits;
  - 60.3 x 2.3 tube - Galv steel
- Optional bore sizes
  - 605-8
  - 605-10
  - 605-12
- Suitable for driven rollers or continuous running



# ROLLER BEARINGS

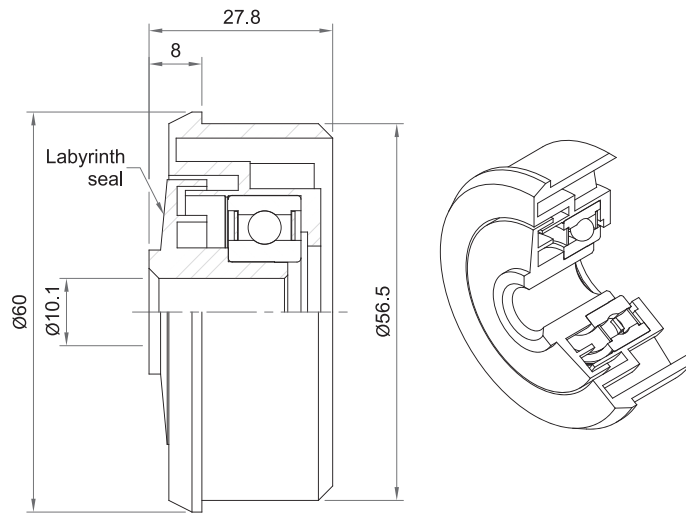
## 605HD-16H Precision Bearing

- Heavy duty
- Load capacity 500kg.
- Steel bearing housing and bush.
- 6205-2RS Bearing.
- Suits;
  - 60.3 x 3.6 tube - Galv steel (50 NB Med.)
  - S/S (50 NB sch. 40)
- Options; 605HD-16, 605HD-19, 605HD-20
- Suitable for driven rollers or continuous running



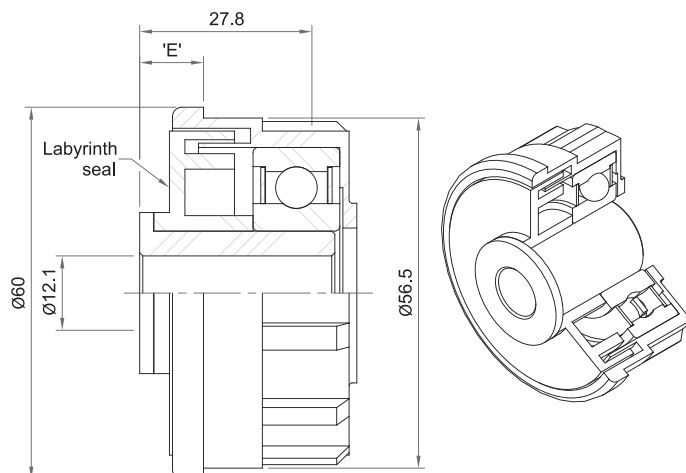
## 607-10 Precision Bearing

- Load capacity 100kg.
- 6202 Bearing.
- Black polypropylene housing (Antistatic).
- Black polypropylene labyrinth, (Antistatic except 8mm).
- Suits;
  - 60.3 x 2.3 tube - Galv steel
  - S/S (sch. 10)
- Available; 607SS - Stainless steel bearing
- Optional bore sizes
  - 607-8
  - 607-11H
  - 607-12
- Suitable for driven rollers or continuous running



## 607HD-16 Precision Bearing

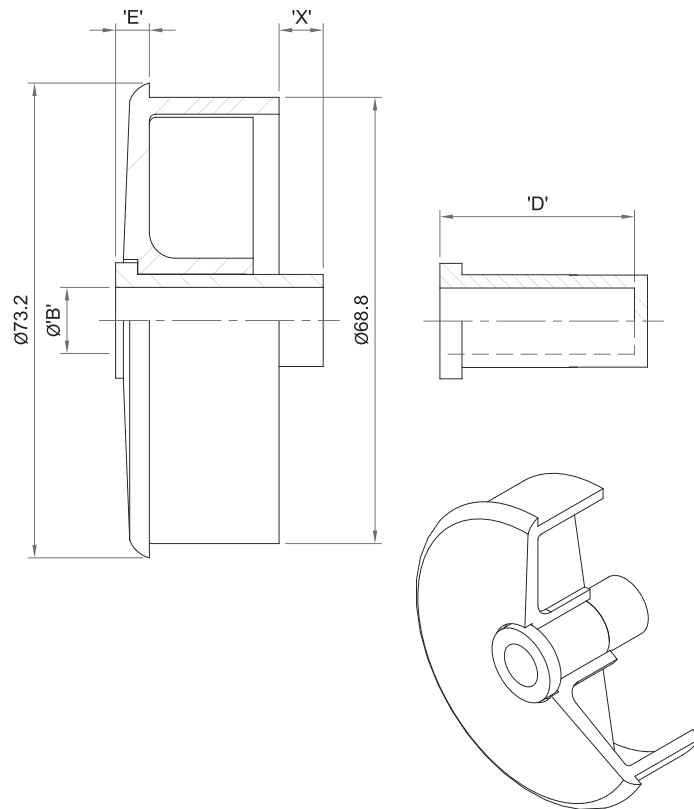
- Load capacity 180kg.
- 6204 Bearings.
- Black nylon housing.
- Black polypropylene labyrinth and reducer bush.
- Suits;
  - 60.3 x 2.3 tube - Galv steel
  - S/S (sch. 10)
- Available; 607HDSS - Stainless steel bearing
- Optional bore sizes
  - 607HD-12
  - 607HD-20
- Suitable for driven rollers or continuous running



| Bore Size | 'E'  |
|-----------|------|
| 12        | 10   |
| 16        | 10   |
| 20        | 7.75 |

### 750 (P65C) Bushed Bearing

- Load capacity 20kg.
- Bearing holder white ABS.
- Suits;
  - 75 x 3 tube - PVC (65 PN9)



| Code     | Bush Material | Bore Size 'B' | Extension 'E' | Inside Extension 'X' | Useable Depth of Blind Bush 'D' |
|----------|---------------|---------------|---------------|----------------------|---------------------------------|
| 750-5    | White Acetal  | 5.1           | 5.5           | 6                    |                                 |
| 750-6    | White Acetal  | 6.5           | 5.5           | 6                    |                                 |
| 750-8    | White Acetal  | 8.7           | 5.5           | 6                    |                                 |
| 750B-8   | White Acetal  | 8.7           | 5.5           | 6                    | 17                              |
| 750-9.5  | White Acetal  | 10            | 5.5           | 6                    |                                 |
| 750B-9.5 | White Acetal  | 10            | 5.5           | 6                    | 30                              |
| 750-10   | White Acetal  | 10.5          | 5.5           | 6                    |                                 |
| 750-11   | Black Nylon   | 11.5          | 7.5           | 0                    |                                 |
| 750B-12  | Black Nylon   | 12.4          | 5             | 0                    | 20                              |
| 750-12.7 | Black Nylon   | 12.8          | 7.5           | 0                    |                                 |

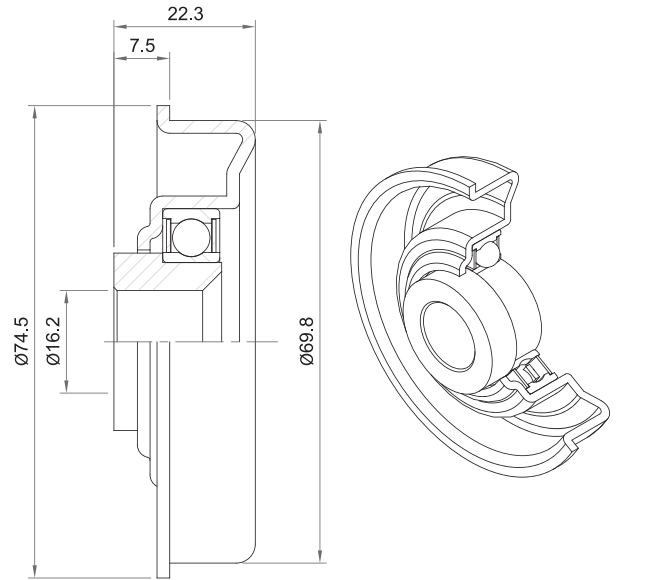
- Also available – Grey polypropylene Bush for high acid environments

# ROLLER BEARINGS

## 755-16 / 755-19 Ball Bearing

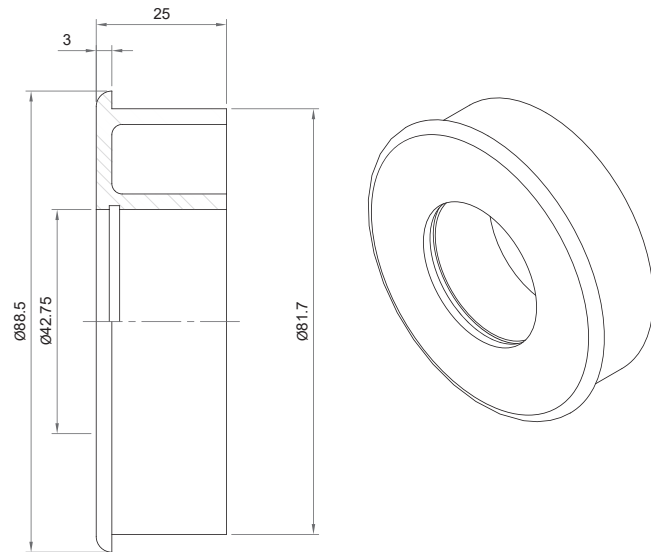
- Load capacity 200kg.
- Steel bearing, housing and bush (z/plated).
- 6905Z bearing.
- Suits;
  - 76 x 3.2 tube - Galv steel (65 NB light)

| Bore Size | 'E' | 'X' |
|-----------|-----|-----|
| 16        | 10  | 30  |
| 19        | 7   | 27  |



## 890 (CP80) Bushed Bearing

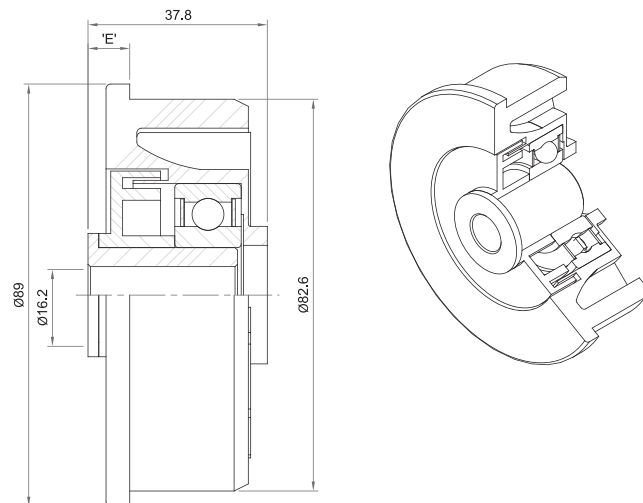
- White ABS reducer bush.
- Suits; 89 x 3.5 tube - PVC (80PN9)
- Fits range of reducer bearings;
  - 480 Bushed
  - 480HD Bushed
  - 481/2 Ball Bearings
  - 487 Precision Bearings



## 897-16 Precision Bearing

- Load capacity 180kg.
- 6204 Bearings.
- Black polycarbonate housing.
- Black polypropylene labyrinth and reducer bush.
- Suits;
  - 89 x 3.2 tube - Galv steel (80 NB light)
  - S/S (schedule 10)
  - Aluminium
- Available; 897SS - Stainless Steel bearing
- Optional bore sizes
  - 897-12
  - 897-20
- Suitable for driven rollers or continuous running

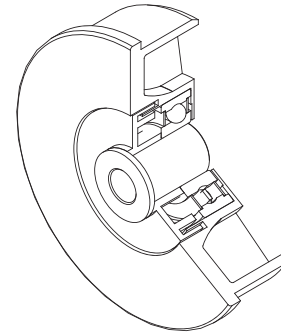
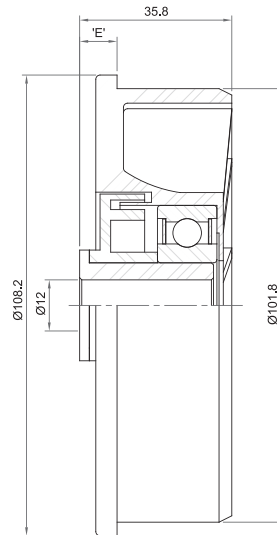
| Bore Size | 'E'  |
|-----------|------|
| 12        | 9    |
| 16        | 9    |
| 20        | 6.75 |



### 1147-20 Bushed Bearing

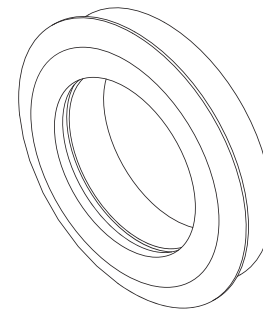
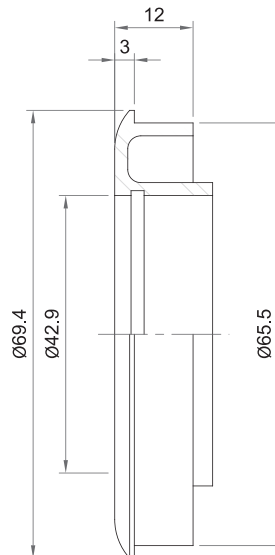
- Load capacity 180kg.
- 6204 Bearings.
- Black polycarbonate housing.
- Black polypropylene labyrinth and reducer bush.
- Suits;
  - 114 x 6 tube - PVC (100 PN12)
  - Steel (100 NB sch.40)
  - S/S (100 NB sch.40)
- Available; 1147SS - Stainless Steel bearing
- Optional bore sizes
  - 1147-12
  - 1147-16

| Bore Size | 'E'  |
|-----------|------|
| 12        | 9.5  |
| 16        | 9.5  |
| 20        | 7.25 |



### TR4 Reducer Bush

- Reducer bush for large end of Dynopipe taper.
- Can also be used as bearing holder for 75 x 5 PVC (65 PN15).
- White ABS.
- Fits range of reducer bearings;
  - 480 Bushed
  - 480HD Bushed
  - 481/2 Ball Bearings
  - 487 Precision Bearings





A to B, seamlessly.



Auckland 09 320 5535  
Canterbury 03 307 0044  
Southland 03 216 1440

Freephone 0800 144 044  
Email [sales@dyno.co.nz](mailto:sales@dyno.co.nz)  
[www.dyno.co.nz](http://www.dyno.co.nz)



It's how businesses get along