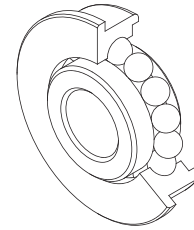
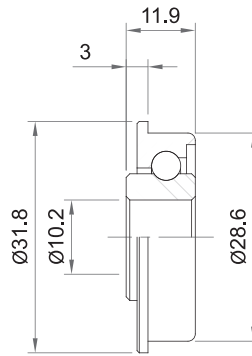


# ROLLER BEARINGS

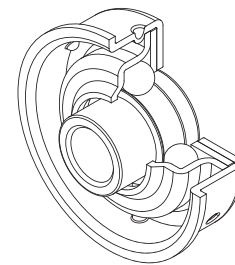
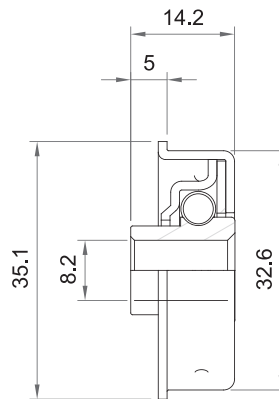
## 323-10 Ball Bearing

- Load capacity 20kg.
- All steel – bearing and holder
- Zinc plated finish.
- Suits;
  - 31.8 x 1.6 tube - Galv. steel
  - S/S
- Optional bore sizes
  - 323-9.5
  - 323-11



## 353-8 Ball Bearing

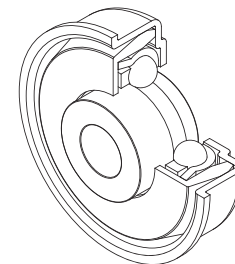
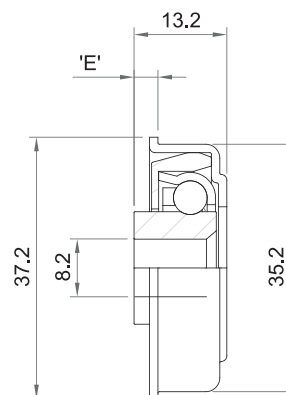
- Free running, ideal for gravity rollers.
- Load capacity 20kg.
- All steel bearing and holder.
- Zinc plated finish.
- Suits;
  - 35 x 1.2 tube - Galv. steel



## 383C-8 / 383C-10 Ball Bearing

Very quiet and free running.

- Excellent for gravity rollers.
- Load capacity 50kg.
- All steel bearing and holder.
- Plastic ball cage, for quiet running.
- Zinc plated finish.
- Suits;
  - 38 x 1.5 tube - Galv. Steel.



Bore Size	'E'
8	5
10	3