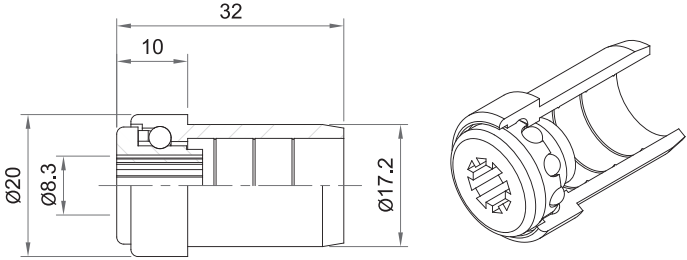


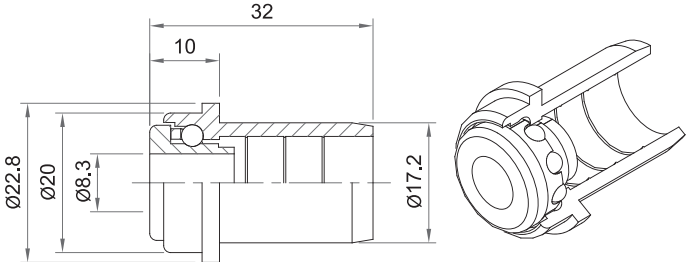
**202-6 Ball Bearing**

- Load capacity 5kg.
- Grey polypropylene inner and outer race.
- Stainless steel balls caged as standard.
- Suits;
  - 20 x 1.5 tube - Aluminium
  - PVC
  - S/S
- Option; 8mm bore, Grey 202-8



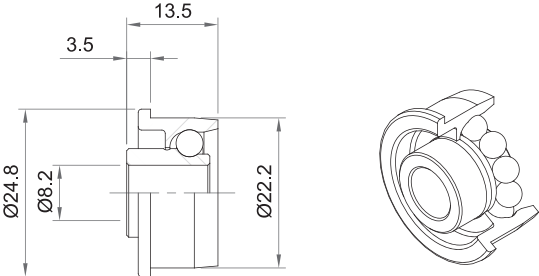
**202T-8 Ball Bearing**

Same as 202-8 with extra flange on head to retain tapered element



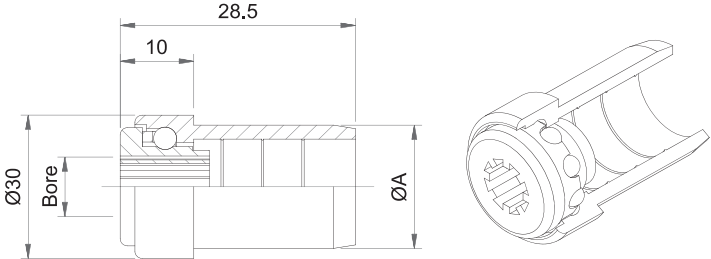
**251-8 / 252-8 Ball Bearing**

- Load capacity 10kg.
- Acetal inner and outer race.
- Black – carbon steel balls (251).
- Red – stainless steel balls (252).
- Suits:
  - 25.4 x 1.6 tube - Galv. steel
  - S/S
  - Dynopipe 254
- Steel Option; 253-8 (25kg load capacity)



**302 Ball Bearing**

- Load Capacity 7kg
- Grey Polypropylene inner and outer race.
- Stainless steel balls caged as standard
- Suits:
  - 30 x 1.8 Plastic Tube (302)
  - 32 x 1.5 Galv or SS (322)
- Option: 6 , 8, 10mm Bore



A	
302	26.5mm
322	28.1mm