

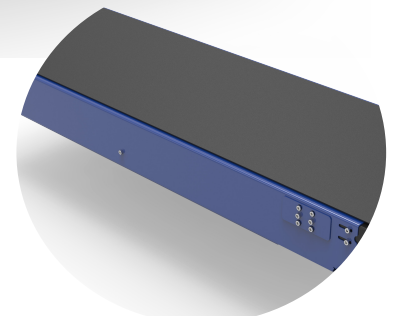
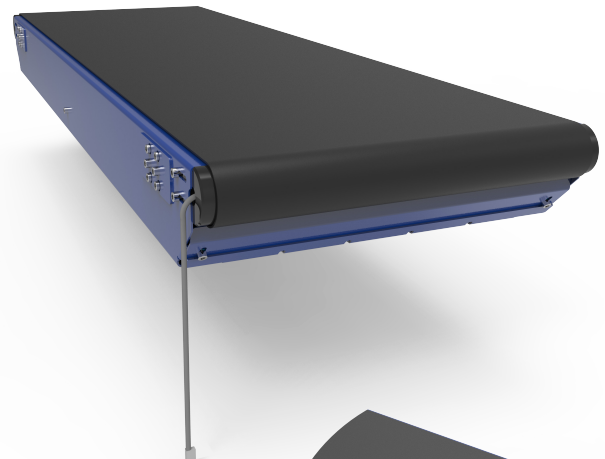


24v SLIMLINE TRANZBELT

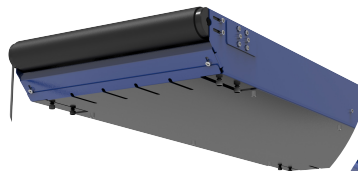
Small yet powerful and sometimes that's all that's needed. For safe, efficient and reliable product movement - this is where aesthetics and function combine. With a requirement to provide safer work environments, this conveyor boasts a number of safety features bringing your safety to the fore. Proven across a wide range of industries, these conveyors are suitable for a vast array of light duty applications with a range of options ensures a fit for any purpose. Boost your productivity and safety with this innovative conveyor.

Features & Benefits

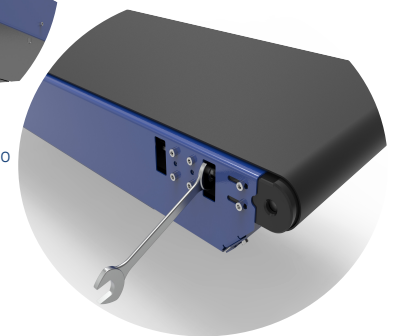
- **Your safety guaranteed*** - with complete underguarding, internal drive drum, smooth edges to minimise pinch points.
- **Quiet and energy efficient** with 24v low power consumption, an economic variable speed drive and motor that only runs when required.
- **A collaborative conveyor** - you and your team can safely work alongside.
- **Hassle free maintenance** with minimal tools required and all parts available through our standard product range.
- Save on space with a low profile frame design.
- Avoid belt adjustment tampering which increases wear and tear with hidden internal belt adjustment.
- Belt supported with either a slider or roller bed.
- Sustainably sourced materials and parts.
- Manufacture from modular designs - so it's there when you need it.
- Reduce product damage with the belt providing a smooth and controllable method of transporting product with ability for rapid stop/starts.
- Accumulate product with Zero Pressure Accumulation
- Flat, incline or decline product movement so you can move product in any direction.
- Range of frame and belt materials to suit every application.
- Economic design with smart utilisation of parts for quick and easy installation.
- ISO 9001 Certified Manufacturing.



Belt runs to the edges of the conveyor



Full underguarding with zero pinch points



Hidden internal belt tracking adjustment



Common Uses

Ideal for light duty applications these conveyors are commonly used in the below applications

- Carton Conveying
- Packing & Dispatch
- Labelling
- Manufacturing
- Warehouse
- Inline Solutions
- Zero Pressure Accumulation

*safety certified for stand alone operation, when installed with other equipment there will be other safety considerations.



24v SLIMLINE TRANZBELT

Specifications & Options

Dimensions

Frame Depth: 120mm
 Length: From 600mm to 2,800mm
 Belt Widths: 450mm & 650mm
 Frame Width: Belt Width + 40mm
 Customisation available



Frame Construction

Stainless Steel
 Powder Coated Mild Steel (standard dulux colour range)

Drive Motor

Ø60mm Head & Tail Drums
 24v Internal Drive Drum
 Control Card Supplied - PNP or NPN
 NB: Power supply available.

Belt Speed

Two drum options with top speeds of 15 mpm or 55 mpm and as slow as 2mpm
 Speed controller integrated into control card

Belt Type

A wide variety of belt types and materials to suit your application.

- Standard Black, Green or White PVC
- Rough/Grip Top
- Food Grade
- Longitudinal Lines

Other materials available on request.

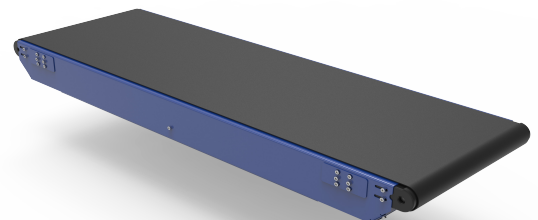
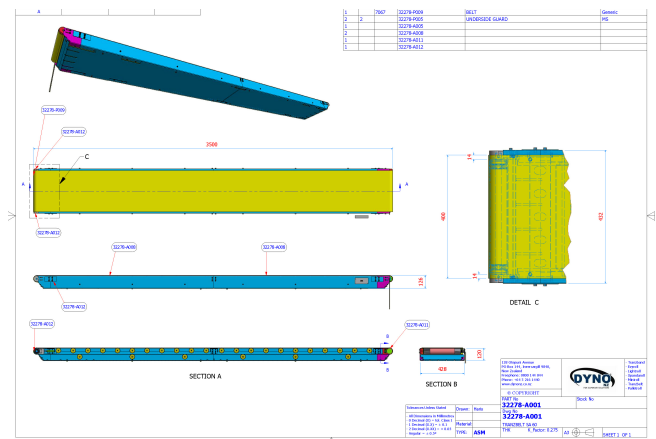
Additional Options

- High sides
- Stands
- Sensors and mounting brackets

Slider vs. Roller Support Bed - How do you decide?

A roller support bed moves the product with less friction, reducing energy requirements by 75% plus. It can also handle heavier loads and higher speeds and is designed to take impact making it ideal for transporting fragile product. Using a roller support bed also gives more flexibility around the length and width of the conveyor.

The slider bed allows you to smoothly transport products making it ideal for the transfer of bags and printer/labelling applications. As the belt is fully supported you can easily divert product off without damaging the product or belt and less components makes this an easier conveyor to clean and maintain.



**Need to boost your productivity & profitability?
 Call us now - 0800 144 044**