

# DYNO PROFILE

*It's how businesses get along.*



# CONTENTS

## ABOUT DYNO, AND HOW WE WORK WITH YOU 3

## ROLLER CONVEYORS 7

DYNODRIVE	8
TRANZBAND	9
PALLET CONVEYORS	10
EZYROLL	11
LIGHTROLL PR	11
MINIROLL	12
MULTIROLL SECTIONS	12
SKATEWHEEL SECTIONS	12

## BELT CONVEYORS 13

TRANZBELT	14
24V SLIMLINE TRANZBELT	15
TRANZBELT TR (TROUGH)	15
TABLETOP SLAT CHAIN	16
AMBAVEYOR	16
VERSATEK	16

## TELESCOPIC & EXPANDABLE CONVEYORS 17

TELESCOPIC CONVEYORS	18
XPANDAROLL	19

## VERTICAL CONVEYORS 20

PRORUNNER MK1	21
PRORUNNER MK5	21
PRORUNNER MK9	22
PRORUNNER MK10	22
AMBAFLEX SPIRALVEYOR	23
SLIDES & CHUTES	23

## DIMENSIONING, WEIGHING & SCANNING 24

IDIMENSION PLUS	25
IDIMENSION PLUS XL	25
IDIMENSION LTL	25

## CHAIN & CHAIN CONVEYORS 26

CHAIN ROLLER CONVEYOR	27
CHAIN CONVEYOR	27
DYNO CHAIN	28
CHEMICAL RESISTANT CHAIN	28
DYNO GLIDE CHAIN	28
CHAIN SPROCKETS	28
CHAIN BREAKER TOOL	28

## CONVEYOR COMPONENTS & ACCESSORIES 29

ROLLERS	30
BEARINGS & ENDCAPS	30
BALL TRANSFERS	31
DYNOFLOAT	31
MTR'S (MULTI DIRECTIONAL ROLLER)	31
SPROCKETS & PULLEYS	31
SKATEWHEELS	32
TRANZBAND COMPONENTS	32
24V ITOH DENKI F-RAT	32
24V DYNODRIVE MOTOR & CONTROL CARD	33
24V DYNODRIVE CUBE	33
24V ITOH DENKI POWERED ROLLER	33
ULTRASLIP	24
CONVEYOR STANDS	34
ROTARY TABLE	34

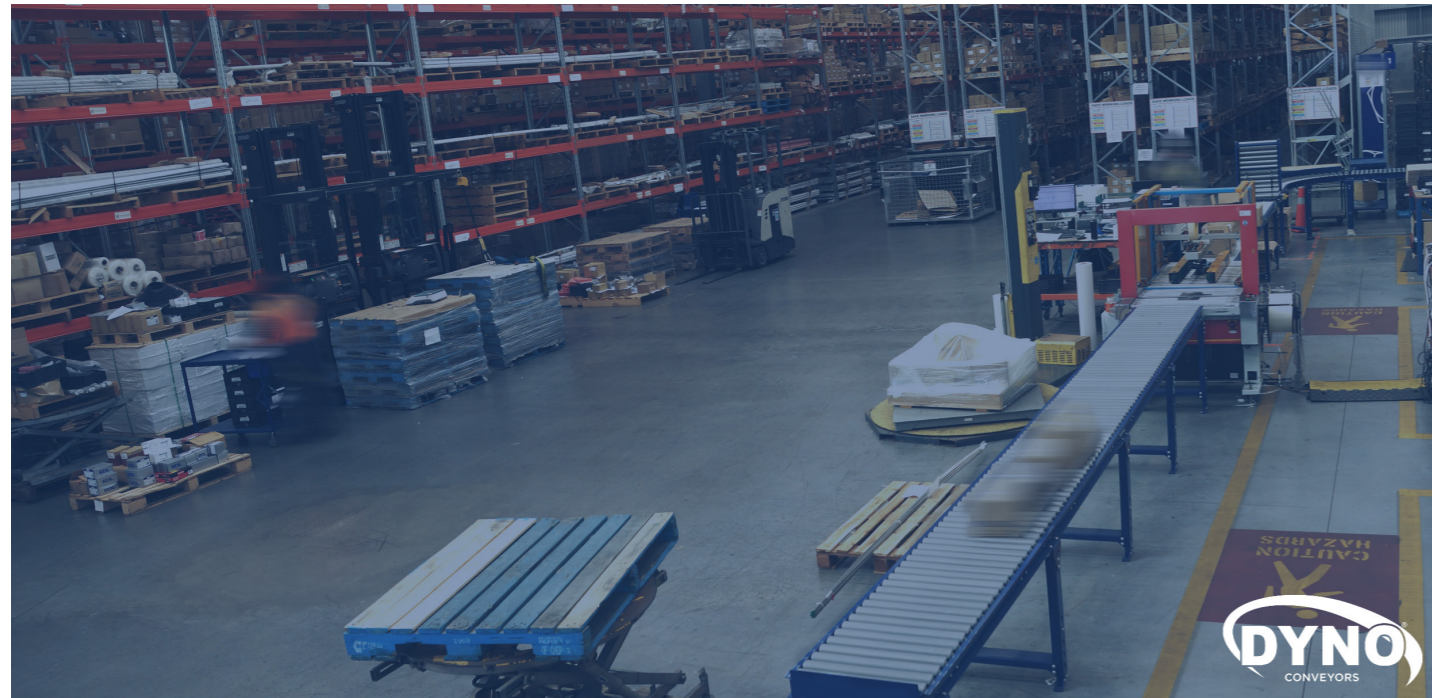
## DYNOCARE 35

# ABOUT DYNO, AND HOW WE WORK WITH YOU



DYNO Conveyors warranties equipment supplied free from defective materials and workmanship for a period of 5 years, subject to satisfactory care and maintenance and being used according to original specifications.

## A BIT ABOUT US



At Dyno we're all about making your business go round.

Up and down.

And side to side.

Propelling you to outstanding levels of profitability, safety and waste reduction.

From distribution centres and fruit packhouses to high level automated sorting - our conveyor systems make moving product, cartons, crates, pallets, meat, fruit and even gravel simple and efficient.

We more than design, manufacture and supply high quality conveyors and product handling systems. Our experienced team work closely with companies large and small; those with existing conveyors, and those starting from scratch to improve processes and increase profitability.

In the industry since 1980, we're an inter-generational Kiwi company which has been analysing, understanding and improving how product moves for over 40 years.

All that experience, and our knowledge of the industries we work with, is part of a total approach that includes on going support with supply of parts and maintenance by trained engineers.

From A to B, seamlessly.



## THE DYNO WAY

Our collaborative approach to get you a purpose built solution that exceeds your expectations day in and day out.



### 1. Engagement

Understanding your current business pain points/constraints and future business goals and projections.



### 2. Discovery

Explore and analyse your unique operational dynamics, ideas and concepts to create scope that meets your needs and requirements.



### 3. Business Case

Solution presentation with a strong business case showing ROI, performance optimisation and planning.



### 4. Delivery

Partnership with solution sign-off; design, manufacture, delivery and installation with communication throughout.



### 5. Lifetime Ownership

Experience the ongoing benefits with continued support from Dyno and the Dyno Care program.

## OUR ORIGIN

The original Dyno chain and components were developed in 1980 specifically for a fruit pre-sizing plant for the New Zealand Apple and Pear Board in Hastings. Named "Dyno" its products were used extensively as a non-corrosive solution for shifting products ranging from fruit right up to pallets.

Seven years later, Dyno began selling new conveyors manufactured by other suppliers. However, these standard items didn't allow the flexibility or levels of quality and specialization the market needed.

That's where the Dyno team stepped-up.

The company began designing products tailored to New Zealand's unique requirements including this country's first moulded plastic tapered rollers. We started customising conveyors to suit customers' needs and requests.

In 1995 we shifted to a new factory in Invercargill, merging the two Dyno businesses. Together, we've grown to where we are today: A New Zealand-owned, New Zealand wide, inter-generational company that's still listening to our customers' needs and making their lives easier; and their businesses more efficient, productive, and profitable.

## TRUSTED BY



## SOLUTIONS

### Project Systems Integrator

We work with you to create your own world class warehouse automation system. A complete system that integrates with your WMS (warehouse management system) to give you the control you need to operate successfully each day.

### Dispatch Solutions

Increase output with optimised flow - instantly prove the benefits of adding conveyors to your dispatch system and keep up with market trends in this ever evolving environment. Purpose built to suit your requirements.

### Product Sorting

Move away from slow manual methods and increase output and accuracy with a conveyor sorting system. Ideal for 3PL, distribution centers and order fulfillment.

### Multi-level Storage & Product Handling

Easily move product between levels and increase health and safety with our multi-level storage and product handling solutions.

### Devanning

Reduce the time required to load and unload trucks and containers with our devanning solutions.

## CORE INDUSTRIES



Warehousing & Distribution



Freight & Logistics



Fruit



Meat



Manufacturing

# ROLLER CONVEYORS



*"They've been very much 'on the case' right through the process and adaptable to meet all the challenges. Now instead of struggling to keep up with customer demand, we can 'chase the game' to grow our business."*

- Wurth

## DYNODRIVE

24 volt zero pressure technology ensures product moves smoothly without one item touching another - ideal for handling fragile or small packages. Safe, quiet and energy efficient; this system consists of an externally mounted 24 volt direct drive, brushless DC motor driven by its own control card - an extremely versatile electronic option for a powered conveyor system.



## TRANZBAND

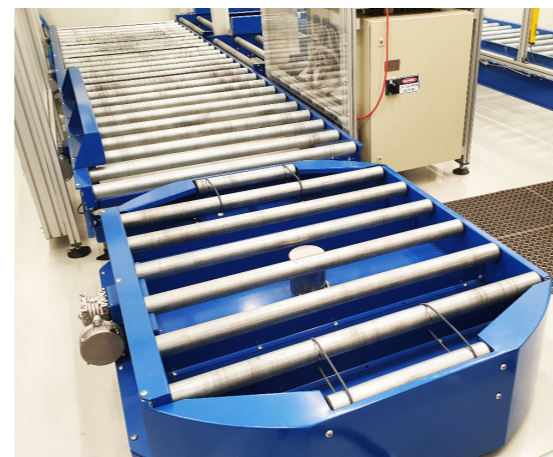
An inbuilt accumulation system and innovative safety features makes this lineshaft conveyor the conveyor of choice in many industries. Easily transfer product, accumulate, move around bends or through gates with this modular design. The basis of the system is a tough polyurethane belt, which enables each grooved roller to be independently driven from a common lineshaft.



*"From the concept stages dyno understood our complex requirements and worked through these to present a concept that not only made operational sense to our immediate requirements but offered scope for future expansion"*  
-Ebos Healthcare

### Features & Benefits

- No Product Damage - 24v Zero Pressure Accumulation (ZPA) ensures product moves along and accumulates without touching.
- Flexibility - externally mounted 24v drive motor means it can easily adapt to a variety of roller sizes and conveyor widths including retrofits.
- Maintenance Friendly - Reduced wear on shaft and bearings with minimal parts required.
- Energy Efficient - direct drive 24v brushless DC motor which only runs when product needs to move.
- Quiet - very low operational noise.
- Simple - no need for PLC.
- Controlled braking system.
- Powerful 200w motor available.



### Features & Benefits:

- Safe - with full underguarding, shaft spacers and smooth safety edges to minimise pinch points.
- Flexibility - modular design can easily be modified or added to, adapting to your needs as you continue to grow.
- Accumulation - rollers will stop running, stopping the product from moving, when it comes up against a physical stop.
- Maintenance Friendly - a mounted shaft can easily be lifted out of the conveyor for quick and easy repairs with all replacement parts readily available.
- Reliable - Shaft spools and spacers increase the wear life of the drive bands.
- Efficient - minimum power consumption with no energy lost through skid friction.



## PALLET CONVEYORS

Pallet roller conveyors are your ideal pallet conveying solution. They reduce the use of forklifts in working areas, ensuring the safety of your staff. Designed to suit a large range of pallets, they can also be integrated with stretch wrappers, lift tables and other pallet handling equipment.



### Features & Benefits:

- Collaborative conveyors - you and your team can safely work alongside with reduced need for forklifts in these areas.
- Flexibility - modular design can easily be modified or added to, adapting to your needs as you continue to grow.
- Fit for each purpose - pallet conveyors available in roller (gravity and powered) and belt conveyor designs.
- Durable - with up to 2 tonne load rating using heavy duty rollers and frames.
- Use with turntables, lift tables, stretch wrappers and other pallet handling material for increased versatility.



Watch the ABB Switchgear Pallet Conveying video online and see how we transformed their production line

[www.dyno.co.nz](http://www.dyno.co.nz)

## EZYROLL

A quality NZ designed and manufactured gravity roller conveyor to efficiently and safely move your goods from A to B. Available in a range of options to suit your requirements these conveyors work great in dispatch applications.



### Features & Benefits:

- Durable with robust roller bearings
- Modular design with multiple roller spacings to accommodate any package or product.
- Easily convey around corners using 45° or 90° bends with tapered rollers
- Use any rollers from our range - PVC, Galvanised or Stainless Steel
- Guiderails, high sides, end stops and pedestrian access gate options available
- Powder coated mild steel or stainless steel construction options



## LIGHTROLL PR

An economic option to move product efficiently, these kitset conveyors are quick and easy to install. Designed for light-medium duty box and carton conveying these conveyors are a proven versatile handling solution for warehousing, distribution and product manufacturing.

### Features & Benefits:

- Durable - quiet and clean PVC Rollers with robust steel bearings.
- Economic - cost effective solution without compromising on quality.
- Flexibility - modular construction of 2.4m lengths that can easily be added to with adjustable roller spacing (pitch) for handling of different sized products.



## MINIROLL

Streamline your product handling with Miniroll Wheel Track. A simple, innovative and cost-effective system designed to improve carton flow and optimise storage space. Popular for use in live pallet racking applications and first in first out (FIFO) storage systems, this robust wheel track is easy to install to instantly improve efficiencies.



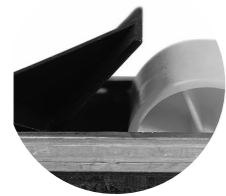
### Features & Benefits:

- Easy to install - comes in standard 2.4m lengths with a range of accessories available to easily mount in place.
- Durable - robust galvanised steel track with zinc plated steel axles for longer wear.
- Quick ROI - with very little set up cost, you can almost instantly begin to experience the benefits.
- Moves cartons and product efficiently with single or double wheel track available for small or irregular shaped products.



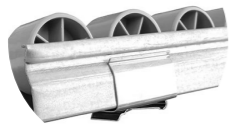
### Common Uses:

- Live Racking / Storage
- Package Handling and Carton Flow
- First in First out (FIFO) Storage Systems



**Non-Return**

Prevents the goods from rolling backwards.



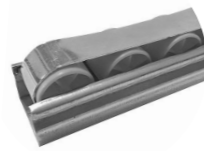
**Mounting Clip**

Attaches to cross bars from 2-4mm thick.



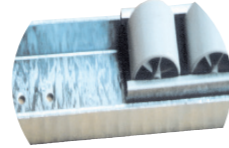
**Strength Clip**

Prevents channel opening under heavy loads.



**Braking Ramp**

Adds friction to slow down product flow.

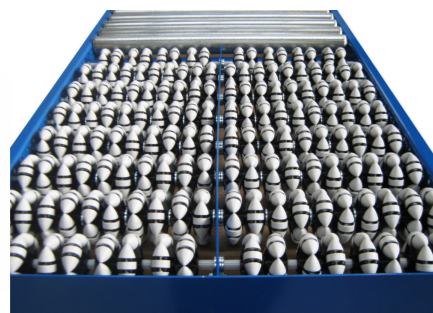


**Joiner**

Join tracks together easily and keep in line.

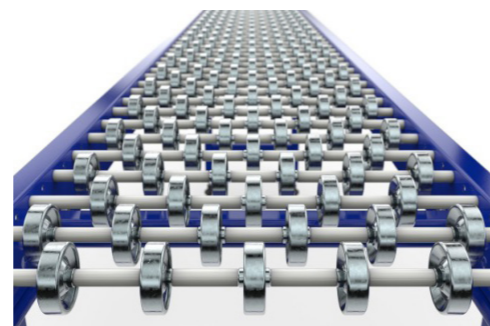
## MULTIROLL SECTIONS

Move products in multiple directions with an MTR or Ball Transfer section. Designed to give your conveyor line flexibility and ensures product moves smoothly and precisely in any direction you need.



## SKATEWHEEL SECTIONS

A lightweight, low cost and ergonomic way to move materials. Combine with powered systems to help reduce energy costs.



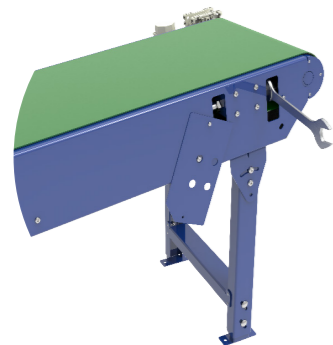
# BELT CONVEYORS

## TRANZBELT

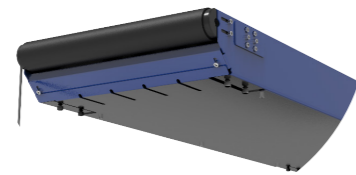
For safe, efficient and reliable product movement - this is where aesthetics and function combine. With a requirement to provide safer work environments, this conveyor boasts a number of safety features bringing your safety to the fore. Proven across a wide range of industries, these conveyors are suitable for many applications with a range of options to ensure a fit for any purpose. Boost your productivity and safety with this innovative conveyor.

### Features & Benefits:

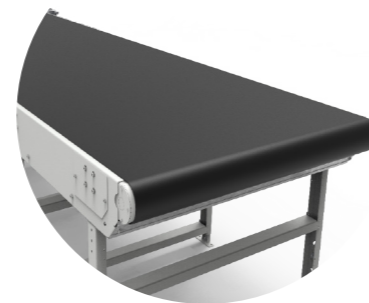
- Safe - with complete underguarding, covered drive shaft and smooth edges to minimise pinch points.
- A collaborative conveyor - you and your team can safely work alongside.
- Maintenance Friendly - minimal tools required and all parts available through our standard product range.
- Reduced product damage with the belt providing a smooth and controllable method of transporting product.
- Avoid belt adjustment tampering which increases wear and tear with hidden internal belt adjustment.
- Supports flat, incline or decline product movement so you can get product where it needs to go.
- Belt supported with either a slider or roller bed.



Hidden internal belt tracking adjustment

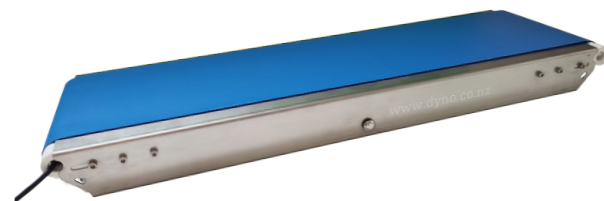


Full underguarding with zero pinch points



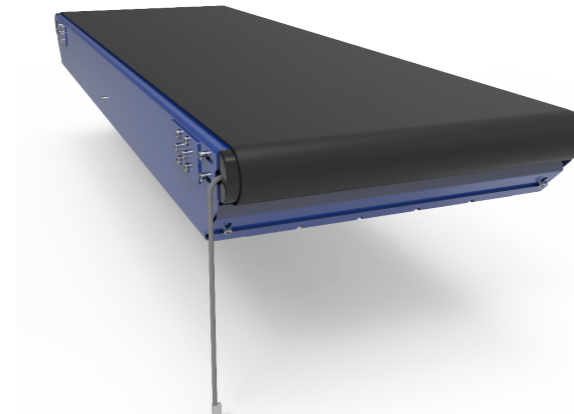
Belt runs to the edges of the conveyor

### MINIBELT



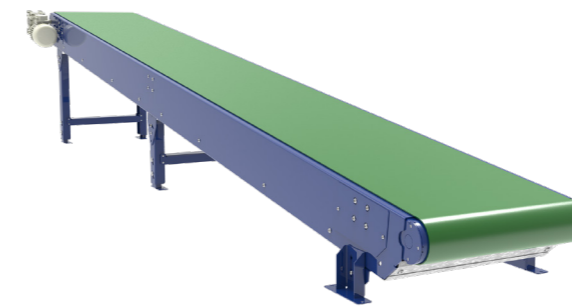
**Load:** up to 5kg  
**Dimensions:** 200mm - 600mm (belt width)  
 300mm - 2,400mm long  
**Speed:** up to 30m/min  
**Drive:** Ø32mm 24v internal drive drum

## TRANZBELT SLIMLINE



**Load:** up to 50kg  
**Dimensions:** 400mm - 1,200mm (belt width)  
 600mm - 4,00mm long  
**Speed:** up to 60m/min  
**Drive:** Ø62mm 24v internal drive drum

## TRANZBELT



**Load:** up to 200kg  
**Dimensions:** to suit requirements  
**Speed:** up to 60m/min  
**Drive:** Ø114mm drive drum with geared motor.  
 Heavy duty Ø219mm option available.

## TRANZBELT TR (TROUGH)

A medium duty trough conveyor designed for moving bulk products such as sand, grain, gravel, bark, seed etc. The concave roller assembly vastly increases the total carrying volume and ensures efficient handling of loose materials.

### Features & Benefits:

- Robust design for strength, stability and safety.
- Belt extends over the frame edges to keep any spillage off return belt.
- Compact, low profile
- Broad range of accessories and drive systems are available to suit your application.
- Can be fully enclosed.





## TABLETOP SLAT CHAIN

A versatile conveyor that easily moves product around corners. Commonly used in manufacturing and processing plants to convey bottles and cans through production.

### Features & Benefits:

- Designed to suit product dimensions and application.
- Conveys product smoothly.
- Supplied in a range of materials including plastic for hygiene areas.
- Easily replace slat chain if required.
- Versatile for transfers.



## AMBAVEYOR

Stable support along the entire width of the conveyor is combined with a unique design and the ability to flex sideways.

### Features & Benefits

- Move product in any direction with the belt being able to flex sideways, negotiate upwards and down and around bends.
- Reduce the number of drive motors required by two thirds
- Product supported entire width of conveyor
- Smoothly conveys cartons, bags, satchels and more



## VERSATEK

A versatile conveying solution that can convey products through radius bends, goose necks and inclines as well as horizontal paths. Ideal for a wide variety of applications this has been developed to allow us to effectively customise a system to your requirements.

### Features & Benefits

- Maintenance friendly with standard geared motors and belt easy to repair or replace.
- Variety of belt types and materials available to suit your application
- Corrosion and abrasion resistant
- Low friction
- Hygienic plastic material makes it ideal for wash down situations.
- Side flexing to easily go around corners



# TELESCOPIC & EXPANDABLE CONVEYORS

## TELESCOPIC CONVEYORS

For rapid and efficient loading and unloading or devanning of goods, these telescopic conveyors are designed and manufactured to safely achieve high handling rates. Expected to halve loading and unloading times as well as the number of staff required, these conveyors will streamline your operation and improve health and safety. Suitable for loading and unloading trucks, trailers, containers and vans - utilising a telescopic boom that can extend up to 18m at the touch of a button. Operate stand alone, or integrate with conveyors for a complete automated system.



*"It saves us about 20 minutes for every container load, which is one third of the time. This makes a huge difference to productivity, which really counts when we're busy."*  
-Leeston Seeds, Canterbury

### Features & Benefits:

- A collaborative conveyor - you and your team can safely work alongside.
- Reduce product damage with soft start belt function providing a smooth and controllable method of transporting product.
- Increase profitability with often half the labour and time required, reducing temp staff costs and management.
- Easily transport a wide range of freight including cartons, sacks, parcels, drums and tyres.
- Improve health and safety with clear separation of staff and machinery e.g. forklifts
- Improve staff ergonomics and posture with reduced need for manual lifting.

### Common Uses:

- Freight Handling & Logistics
- Container Devanning
- Warehouse & Distribution Centers
- 3PL Third Party Logistics
- Supply Chain
- Loading and unloading of trucks, containers, vans, trailers and rail cars.



## XPANDAROLL

Achieve more with much less. Stretch and bend your height-adjustable expanding conveyor to take products wherever you need them. Cartons follow the twist and turns of the conveyor path without side rails or engineered curves. Simply fold away when finished. Ideal for changeable product runs in dispatch and trailer unloading and loading.

### Features & Benefits:

- Expand and contract conveyor to suit your requirements, folds down to 1.6m and expands out to 6m.
- Structural steel support channel spans entire conveyor width for strength.
- Self tracking with free running skate wheels.
- Adjustable height, simply turn the locking knob to raise or lower the conveyor bed height.
- Fully lockable castor wheels.
- Easy set up.
- Connecting brackets to join conveyors together.

### Common Uses:

- Dispatch and inwards areas
- Courier parcel handling
- Truck loading/unloading
- Distribution centers
- Mobile assembly lines



## 33% FASTER PACKING WITH LESS STAFF FATIGUE

### LEESTON SEEDS TELESCOPIC CASE STUDY

#### Their Workable Solution Made Things Much Easier

"Dyno came up with an option that met our needs well. It was a 'telescopic' conveyor that could be extended to deliver the seed bags to exactly where they were needed for container loading, without requiring belt adjustments every time. This 'one step process' eliminated previous multiple handling with forklifts, pallets, staff walking back and forth, and bending down for lifting."

#### Extra Mile Service to keep Things Humming

"Dyno installed the system and went out of their way to ensure our satisfaction. They observed us the first time to ensure that everything was working properly. Their follow-up service was very responsive and helpful, with ongoing contact to check everything continued working satisfactorily."

#### The Outcome

"The new conveyor is very versatile and adaptable. It saves us about 20 minutes for every container load, which is one third of the time. This makes a huge difference to productivity, which really counts when we're busy. Our staff and trucking company staff get a lot less fatigued. We can redeploy our staff to do other productive work, so it's a win for both management and workers. The truck companies now get a faster turnaround here - which has become known around Canterbury."

# VERTICAL CONVEYORS

## VERTICAL CONVEYORS

### PRORUNNER® MK1

This solid, cost-effective vertical conveyor will work, day in day out, year in year out, - lifting and lowering products without effort.

#### Features & Benefits:

- Fits into almost any layout with minimum footprint and compact design.
- Suitable for vertical sorting (several heights)
- Low operational noise
- Robust, solid construction with very low maintenance
- Can handle boxes, crates and sacks up to 75kg



### PRORUNNER® MK5

Guaranteeing an uninterrupted product flow, this continuous lift effortlessly and quickly transports a wide variety of products between multiple levels.

#### Features & Benefits:

- Continuous product flow between levels with no start/stop movement.
- Possibility for in and outfeed on more than two levels.
- Number of carriers increases capacity.
- Couple with retractable conveyors for a vertical sorting system.
- Shock free movement with a patented cam follower system.

#### Common Uses:

- Mezzanine Floors
- Courier parcel handling
- Truck loading/unloading
- Distribution centers
- Mobile assembly lines



Watch how it works online  
[www.dyno.co.nz](http://www.dyno.co.nz)



## WHY VERTICAL TRANSPORT?

Space is sparse and expensive. If possible, every square meter in a production area or warehouse should be used as efficiently as possible. This also means that products are increasingly in need of vertical space.

Given the layout of production processes, vertical transport is often necessary in a production line. One reason may be that products for the next machine in the line needs to be supplied at a different height. Sometimes it is simply desirable to free up the floor, for example to give people or trucks access or to make room for other machines. This will almost always involve a steady stream of mostly identical products that need to be transported no more than a few meters up or down.

In warehouses, it is important to not only use the number of square feet, but also the number of cubic feet as efficiently as possible. Activities such as order picking are increasingly conducted on different floors, which are connected through a transport system. This system must not only be able to transport products several feet up, but also back down again at a rate that varies considerably throughout the day. Additionally, distribution centres are making use of fully automated storage and order picking systems with all the characteristics of a production line.

## PRORUNNER® MK9

Lift and lower pallets easily with this cost effective, low maintenance lift. Ideal for transporting up to 60 pallets per hour, this lift fits into any layout. A clever design and reliable components means the lift almost looks after itself.

### Features & Benefits:

- Fits into almost any layout with minimum footprint and compact design.
- Suitable for vertical sorting (several heights)
- Low operational noise
- Robust, solid construction with very low maintenance
- Drop down protection included
- Right angle arrangement possible
- Can handle pallets and racks up to 1200kg



## PRORUNNER® MK10

The heavy-weight champion of this series, the MK10 needs very little maintenance and will handle up to 60 pallets/hour without missing a beat.

### Features & Benefits:

- Fits into almost any layout with minimum footprint and compact design.
- Suitable for vertical sorting (several heights)
- Low operational noise
- Robust, solid construction with very low maintenance
- Automated drop down protection
- Right angle arrangement possible
- Optional pallet centering and stopper
- Can handle pallets and racks up to 2000kg



### Common Uses:

- Mezzanine Floors
- Courier parcel handling
- Truck loading/unloading
- Distribution centers
- Mobile assembly lines



## AMBAFLEX SPIRALVEYOR®

SpiralVeyor is perfect for high throughput applications where real estate is precious. This simple and reliable conveyor continuously moves medium to large sized products up and down many levels, accumulates and much more with proven technology.



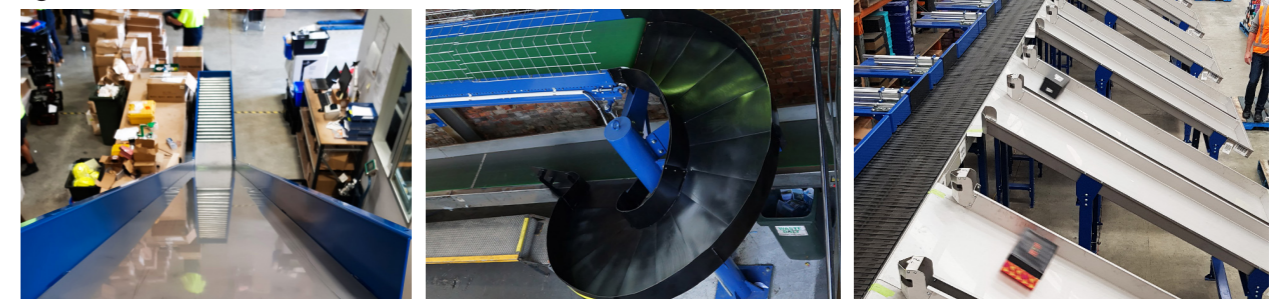
Download the Specification Form online.  
www.dyno.co.nz

### Features & Benefits:

- A collaborative conveyor - you and your team can safely work alongside with no need for guarding or safety fencing.
- Easily convey unstable products with support the total width of the conveyor.
- Continuously move product; up, down and reversible.
- Highly configurable to suit every application
- Elevate and accumulate product
- High product throughput
- Proven technology, manufactured by Ambaflex - world renowned in spiral conveying.

## SLIDES & CHUTES

A simple concept that easily moves product down, allowing for accumulation.



# DIMENSIONING, WEIGHING & SCANNING

## IDIMENSION PLUS®

Automatically measure parcels and irregular packages in less than 0.2 seconds. A small footprint allows for easy integration into current workstations or retail environments.

### Features & Benefits:

- Prevent revenue loss - accurately provides dimension and weight calculations required by couriers.
- Dimensions a range of products including boxes, flats, polybags and more.
- Increase productivity with product being dimensioned faster and more accurately than manual measurements.
- Easy to assemble with limited operator training required.
- Traceability with a photo captured of every item.
- USB touch screen for results and operator controls.



## IDIMENSION PLUS XL®

A Mount-anywhere solution gives you the flexibility to install dimensioning technology anywhere - over a conveyor, table or scale from a pole, ceiling mount of support beam.

### Features & Benefits:

- Prevent revenue loss - accurately provides dimension and weight calculations required by couriers.
- Dimensions a range of products including boxes, flats, polybags and more.
- Increase productivity with product being dimensioned faster and more accurately than manual measurements.
- Easy to assemble with limited operator training required.
- Traceability with a photo captured of every item.
- USB touch screen for results and operator controls.



## IDIMENSION LTL®

Optimise dimensional shipping and enhance quality assurance verification in loading bays, warehouses and shipping and receiving departments.

### Features & Benefits:

- Dimensions any shape in any orientation.
- 360° access for easy pallet placement in the center of the target zone.
- No moving parts and solid-state design.
- Operator display provides instantaneous feedback to the forklift or pallet jack operator, communicating dimensions and system status.
- Network integration to communicate images and dimensions to WMS
- Two high -resolution cameras perform freight identification, damage assessment and tracking.



# DYNO CHAIN & CHAIN CONVEYORS

## CHAIN ROLLER CONVEYOR

The Dyno Chain system, exclusive to Dyno, is manufactured from Acetal, a high strength plastic with greater dimensional stability when compared to other common plastics. It has the advantage of requiring no wear strip with low coefficient of friction and is ideal for any challenging product movement.

### Features & Benefits:

- Available in 3" pitch (Dyno 300) or 2.5" pitch (Dyno 600) with a range of rollers to ensure a fit for every purpose.
- Low maintenance with long life parts and little lubrication required.
- Easily convey irregular product
- Resilient with chain being non-corrosive, abrasion resistant and ability to go through water.
- Quiet with low operational noise

### Common Uses:

- Fruit & Vegetable Grading Tables
- Elevators



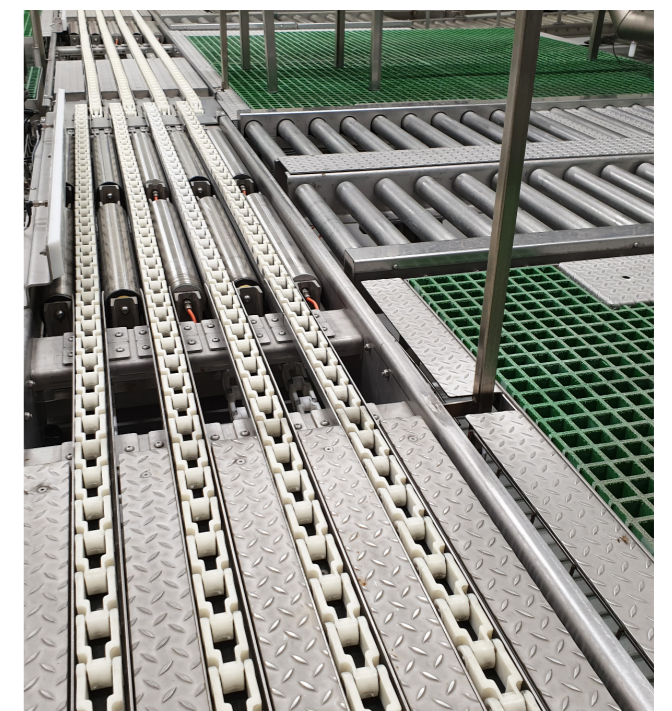
## CHAIN CONVEYOR

### Features & Benefits:

- Available in 3" pitch (Dyno 300) or 2.5" pitch (Dyno 600)
- Low maintenance with long life parts and little lubrication required.
- Easily convey irregular product including pallets, bins and cans.
- Resilient with chain being non-corrosive, abrasion resistant and ability to go through water.
- Quiet with low operational noise

### Common Uses:

- Product Manufacturing
- Pallet Conveying

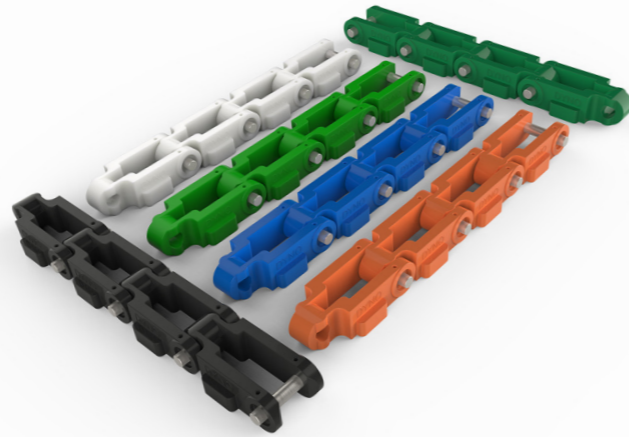


## DYNO CHAIN

Lightweight, quiet, clean and non-corrosive the Dyno Chain ranges from extremely low friction to chemical resistant to cater for every requirement.

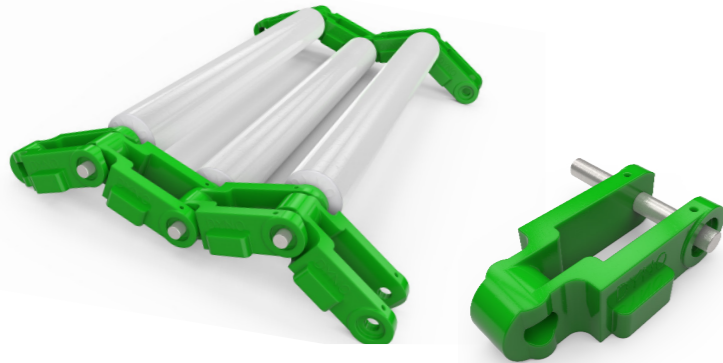
### Features & Benefits:

- Available in 3" pitch (Dyno 300) or 2.5" pitch (Dyno 600)
- Low maintenance with long life parts and little lubrication required.
- Resilient with chain being non-corrosive, abrasion resistant and ability to go through water.
- Quiet with low operational noise
- Will run in any direction.
- UV resistant and chemical resistant chain options available.
- Chain breaker tool available



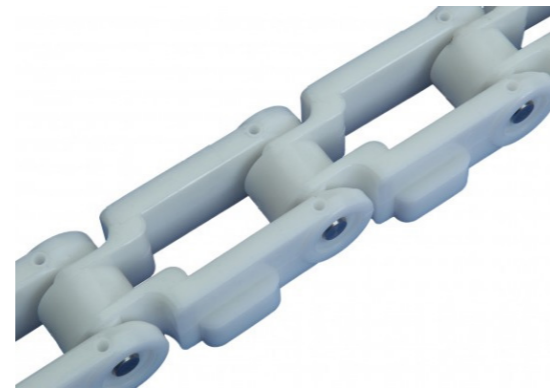
## CHEMICAL RESISTANT CHAIN

Extensively researched & tested to resist chemicals added to fruit water dumps.



## DYNO GLIDE CHAIN

A non-lubricated chain system perfect for any demanding product movement. Combine with UltraSlip wear strip for huge energy savings - tested and proven to be more efficient.



## CHAIN SPROCKETS

Our comprehensive range of sprockets supports the Dyno Chain range. Available in Polypropylene or aluminium with either 6, 8 or 10 tooth sprockets.

Polypropylene



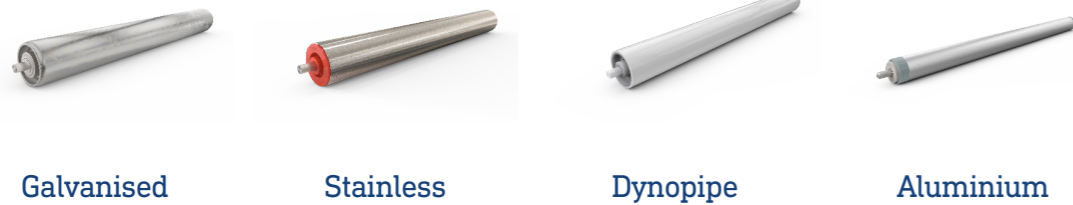
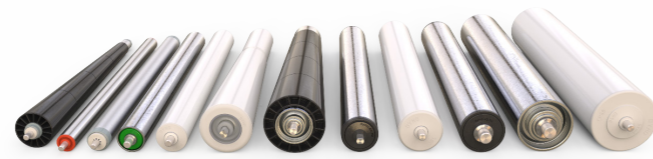
Aluminum



# CONVEYOR COMPONENTS & ACCESSORIES

## ROLLERS

Made from PVC, aluminium, galvanised or stainless steel with a wide variety of tube sizes, shaft diameters and bearing styles, we can produce to suit your application.



Galvanised

Stainless

Dynopipe

Aluminium



Grooved

For band driven and powered roller conveyors.

Sprocketed

Chain, mini-v, band or tooth belt driven.

Tapered

For use on bends to guide product around.

Troughed

To support troughed belt conveyors.

Drums

Largely used as head and tail drums on belt conveyors.

### Roller Extras

- Zinc Plating
- Rubber or Plastic Coating
- Shaft extras including female threads, male threads, flats, cross drills, circlips and grooves.
- And more!

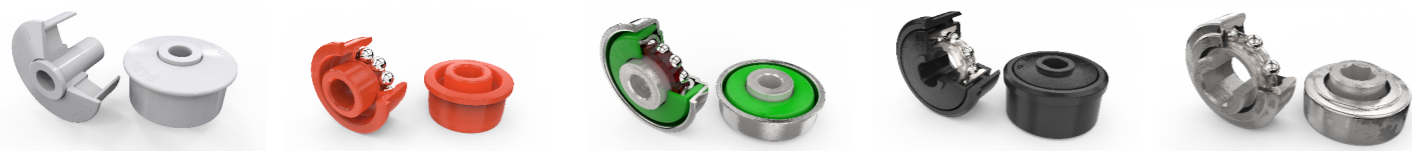
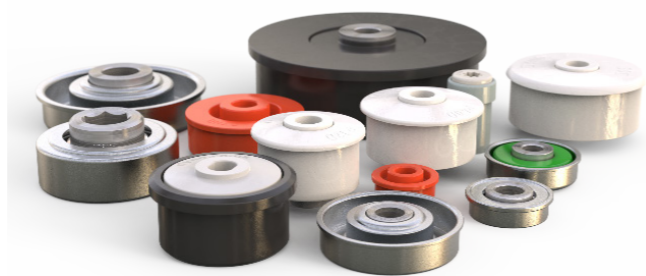


Download your Roller Order Form online.  
[www.dyno.co.nz](http://www.dyno.co.nz)

## BEARINGS & ENDCAPS

20mm to 114mm roller bearings to suit our range of rollers.

View the full range online  
[www.dyno.co.nz](http://www.dyno.co.nz)



Bushed

ABS endcaps with bushes.

PVC Race

Thermoplastic race with stainless steel balls.

Steel

Steel (unground) with caged balls.

Precision

Zinc plated or thermoplastic housing.

Heavy Duty

Zinc plated or thermoplastic housing.

## BALL TRANSFERS

Move product smoothly, precisely and with minimum effort in any direction. Robust construction with steel pressing and hardened balls - available in both carbon or stainless steel. A wide range of ball transfer units available with more sizes available on request.



Tube Fit

Flanged

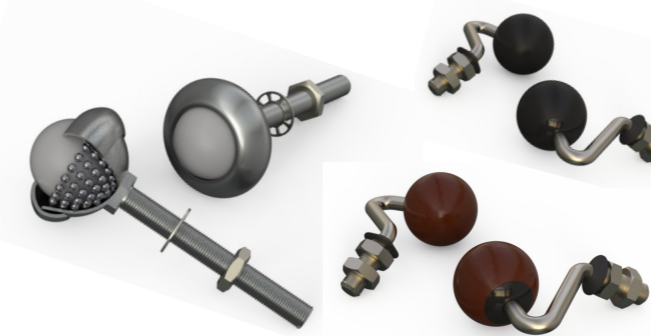
Base Fit

Thread Fit

Heavy Duty

## DYNOFLOAT

These ball castors allow for smooth, safe conveying and directional changes for sheet materials whilst protecting delicate or polished surfaces.



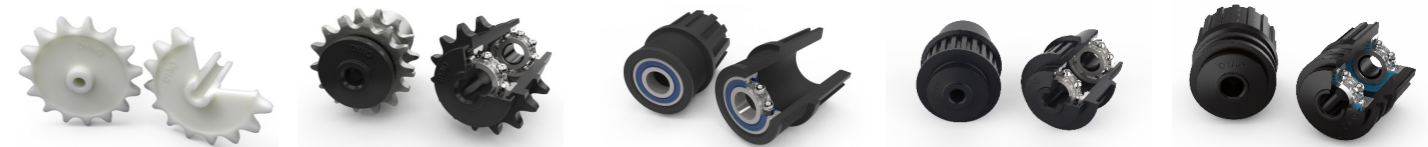
## MTR'S

Easily move product in any direction with these multi directional rollers. Suitable for all applications where flat based goods are transferred, compiled, sorted and shipped.



## SPROCKETS & PULLEYS

A wide range of sprockets and pulleys to suit any application. From steel through to plastic, with precision or bushed bearings. Adaptors, Chain and tooth belts available as well.



Lightweight Roller Drive

Chain Driven Sprockets

Mini-V Pulley

Tooth Belt Pulley

Band Driven Pulley



## SKATEWHEELS

A lightweight, low cost and ergonomic way to move materials. Available in plastic or steel.



## TRANZBAND COMPONENTS

All the parts and components you need to keep your Tranzband (lineshaft) conveyor in top condition.



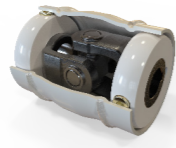
**Drive Bands**

Urethane bands, available in clear, blue (high strength) or black twisted for emergency repairs.



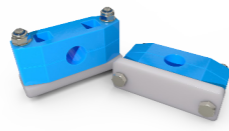
**Drive Spools**

Standard, Split or Speed up to suit a 25mm Lineshaft with Cliplocks



**Universal Joints**

Keep rolling around those bends with a universal joint complete with cover for your safety.



**Bearing Blocks**

High grade acetal blocks for washdown areas only



**Chain Couplings**

Seamlessly join your Tranzband together with plastic chain and two coupling sprockets

## 24V ITOH DENKI DC F-RAT

Operating at a safe low voltage the F-RAT (Flat Right Angle Transfer) will move your product quickly, quietly and smoothly. Easily configurable, it can transfer product forwards and backwards, left and right. Being a complete unit means easy integration with any conveyor to upgrade and automate transferring of product.



## 24V FLOW SORT

A high speed, flexible, modular sorting line; which can be configured to your requirements. Easy to install, easy to change and easy to control.



## 24V DYNODRIVE MOTOR & CONTROL CARD

A 24v direct drive, brushless DC motor, driven by its own individual control card. Easy to install on existing or new systems and can be configured for use in several different operating modes. Safe, quiet and reliable this product gives you greater flexibility and control.



### Features & Benefits:

- Safe, 24v low power consumption
- 100w or 200w motors with SCC-3 or SCC-3 high performance control cards.
- Dynamic speed adjustment
- Easy to install with plug and play simplicity and complete installation, set-up and troubleshooting guides available on request.
- Search and rescue function that finds cartons that otherwise might become lost.
- Can operate in ZPA (Zero Pressure Accumulation) mode or in ZIP (small gap) mode for maximum throughput.



## 24V DYNODRIVE CUBE

Achieve more with less - no bigger than your ballpoint pen, this is the geared motor of choice for visionary conveyor owners that value long-term reliability. The 24v DynoDrive motor is coupled to a compact and powerful right angle gear reducer, integrating three innovative products from a single source.

### Features & Benefits:

- Safe, 24v low power consumption
- Energy efficient with an economic variable speed drive and motor that only runs when required.
- Range of motor and gearbox sizes ensuring a fit for any purpose
- Superb torque to speed performance curve.



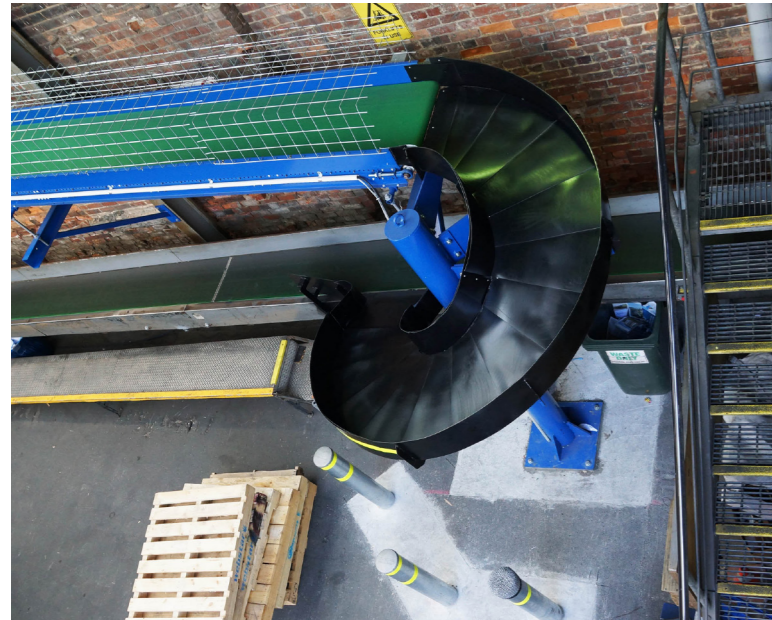
## 24V ITOH DENKI POWERED ROLLER

These rollers with an internal motor are a compact, safe and energy efficient way to take your products from A to B. Each roller controls a small zone of slave-driven rollers - ideal for ZPA (Zero Pressure Accumulation).



## ULTRASLIP

A super slippery plastic, ideal for many applications in the package handling industry including chute linings, slider beds, slides, spirals and any areas where packages can get lodged or damaged.



## CONVEYOR STANDS

Give your conveyor a lift with our range of stands to suit flat, incline or decline conveyors.



Micro Adjustable  
Powder Coated



Micro Adjustable  
Stainless with  
Henley Plates



Ajustafoot Stainless



Ajustafoot Powder  
Coated

## ROTARY TABLE

Accumulation made simple and safe with a 24v driven rotary table. A stainless steel top ensures a long life and a very hygienic work surface. It also features a handy storage shelf below the table itself.



# DYNO CARE

**DYNO CARE** is a programme that ensures clients' conveyors operate at maximum efficiency, and avoids costly interruptions to processes.

We work with clients to ensure that routine maintenance and checks are carried out without disruption and according to their needs.

Please note: meat processing operations may need more specialized care than distribution.

For advice on your system, please talk to **DYNO CARE**.

**Trevor Cornes**  
Managing Director

### DAILY

- General housekeeping and cleaning
- Inspect for correct operation
- Remove any foreign objects from the conveyor

### WEEKLY

- Check all rollers are rotating
- Clean, or wipe, PE sensor lenses and reflectors

### MONTHLY

- Inspect roller condition
- Lubricate bearings, if needed (Note: Over-greasing can result in reliability issues)
- Check gearbox oil levels
- Check the gear motor
- Inspect conveyor drive for any foreign material
- Inspect chain drive for correct tension
- Check limit switches and PE sensors
- Lubricate universal joints on curves
- On Tranzband Conveyor, check that all drive bands are running on spools

### QUARTERLY

- Check roller and bearing condition
- Check drive sprocket and chain condition and adjust, if needed
- Check for loose guide rails, correct if necessary

### ANNUALLY

- Lubricate conveyor drive chain
- Inspect components for wear and tear – replace as required
- Check conveyor bed condition, splice plates, support mounting, adjust bolts for loose equipment and tighten as needed
- Visually check condition of electrical equipment



A to B, seamlessly

0800 144 044

[enquiry@dyno.co.nz](mailto:enquiry@dyno.co.nz)

[www.dyno.co.nz](http://www.dyno.co.nz)

EDL  
CUSTOMER COLLECTION AREA